



*Ucla*  
**BRUINS**



**UCLA**

**WOMEN'S TENNIS 2016**







**Front Row (L-R):** Eliza Day, Catherine Harrison, Kristin Wiley, Laura Luca, Cameron Patterson, McKenzie Purcifull

**Back Row (L-R):** Head Coach Stella Sampras Webster, Student Manager Allie Glover, Dominika Matkowska, Kelly Shaffer, Terri Fleming, Alaina Miller, Kyle McPhillips, Maia Magill, Student Manager Dominique Cetale, Associate Head Coach Rance Brown, Volunteer Assistant Coach Giancarlo Cava

## ► 2016 Roster

Name (Rank)	Ht.	Yr.	Hometown (High School)
Eliza Day	5-1	So.	Newport Beach, Calif. (JSerra Catholic )
Terri Fleming	5-6	So.	Atlanta, Ga. (Home School)
Catherine Harrison	5-5	Sr.	Germantown, Tenn. (Laurel Springs Online Academy)
Laura Luca	5-3	Sr.	Bucharest, Romania (Mihai Viteazul National College)
Maia Magill	5-11	So.	Studio City, Calif. (Laurel Springs Online Academy)
Dominika Matkowska	5-5	Sr.	Szczecin, Poland (Adam Asnyk)
Kyle McPhillips	5-5	Sr.	Willoughby, Ohio (Andrews Osborne Academy)
Alaina Miller	5-6	Fr.	Saratoga, Calif. (Laurel Springs Online Academy)
Cameron Patterson	5-8	Fr.	Los Angeles, Calif. (Malborough School)
McKenzie Purcifull	5-9	So.	Newport Beach, Calif. (Corona del Mar)
Kelly Shaffer	5-11	Jr.	Rancho Santa Fe, Calif. (The Bishop's School)
Kristin Wiley	5-8	So.	Fort Lauderdale, Fla. (Broward Virtual School)

**Head Coach:** Stella Sampras Webster | **Associate Head Coach:** Rance Brown  
**Volunteer Assistant Coach:** Giancarlo Cava

## ► Team Personnel

**Head Coach:** Stella Sampras Webster  
*20th Season, UCLA '91*

**Associate Head Coach:** Rance Brown  
*19th Season, Long Beach State*

**Volunteer Assistant Coach:** Giancarlo Cava  
*2nd Season, UC Riverside*

**Student Managers:** Dominique Cetale, Allie Glover

## ► Pronunciation Guide

Maia Magill  
 Dominika Matkowska

MAYA  
 Dom-in-ee-ka

## ► Stella SAMPRAS WEBSTER

Head Coach • 20th Season • UCLA '91



Head coach Stella Sampras Webster enters her 20th season at the helm of the UCLA women's tennis program in 2015, compiling an impressive overall record of 368-136 (.730). Sampras Webster is only the third head coach in UCLA women's tennis history, following legendary coaches Bill Zaima (1972-76 & 1986-96) and Gayle Godwin (1977-86).

Sampras Webster recently guided the program to its second NCAA Championship in the last seven years, as the Bruins captured the 2014 NCAA title in Athens, Georgia with a thrilling 4-3 victory over North Carolina in the final. It marked the 111th NCAA Championship for UCLA, as the Bruins finished the 2014 campaign with a 27-2 overall record, which included a 9-1 mark in the highly-competitive Pac-12 Conference. UCLA did not surrender the doubles point in any match last year, going a perfect 29-0 in doubles play. The 2014 season marked the second NCAA Championship for Sampras Webster, as she also led UCLA to the title in 2008. UCLA's 2008 title was the first NCAA Championship for the program, following up on the team's 1981 AIAW national crown.

The 2012 ITA National Coach of the Year, Stella Sampras Webster is also responsible for helping the Bruins to their first Pac-10 Championship in 2008, as UCLA ended the conference season with a 7-1 record that year. For her efforts, she was named Pac-10 Coach of the Year at the end of the season.

Few college coaches can match Sampras Webster's ability to continually put their teams in the title hunt year in and year out. Prior to her first title in 2008, she also had a pair of second-place finishes at the NAAs in 2004 and 2007. In all, Sampras Webster's teams have finished in the top 10 at the NCAA Championships in 17 of her 18 seasons in Westwood. UCLA has also finished in the top 5 nationally on 12 occasions (1997, 2000, 2002, 2003, 2004, 2007, 2008, 2009, 2011, 2012, 2013 and 2014).

The 2000 ITA West Region Coach of the Year, Sampras Webster has recruited and coached some of the top players in collegiate tennis. Under her tutelage, a total of 25 players have achieved All-America status. Two of the most notable during Sampras Webster's tenure are Riza Zalameda and Robin Anderson. Zalameda was a four-time All-American and the Most Outstanding Player

### ► Career Coaching Record

Year	Overall Record	Conf. Record	Conf. Finish	NCAA Finish
1997	16-6	7-3	2nd	T-5th
1998	17-11	5-3	4th	T-9th
1999	18-8	5-3	4th	T-17th
2000	17-9	6-2	T-2nd	T-5th
2001	9-19	4-4	7th	T-9th
2002	19-5	6-2	3rd	T-5th
2003	16-11	4-4	5th	T-5th
2004	21-8	6-2	3rd	2nd
2005	17-6	6-2	3rd	T-9th
2006	15-7	5-3	4th	T-9th

Year	Overall Record	Conf. Record	Conf. Finish	NCAA Finish
2007	21-8	6-2	T-2nd	2nd
2008	24-5	7-1	T-1st	1st
2009	19-7	5-3	T-9th	4th
2010	21-4	6-1	2nd	T-9th
2011	22-6	7-1	2nd	T-3rd
2012	26-3	8-2	T-3rd	2nd
2013	20-6	7-3	4th	T-3rd
2014	27-2	9-1	2nd	1st
2015	23-5	8-2	3rd	2nd
<b>Totals</b>	<b>368-136</b>	<b>74-21</b>		

at the 2008 NCAA Championships. She and partner Tracy Lin captured the NCAA Doubles title in 2008, marking the second UCLA team to capture the doubles title under Sampras Webster's tenure. Lauren Fisher and Daniela Bercek also won the title in 2004. Anderson, who like Zalameda was named the Most Outstanding Player at the NAAs in 2014, is heading into her senior season on pace to become a four-time All-American in both singles and doubles.

A 1991 graduate of UCLA with a degree in Psychology, Sampras Webster enjoyed a successful four-year career as a Bruin player from 1987-91 and competed on the pro circuit for a season prior to joining Zaima's staff. An NCAA Doubles Champion as a freshman in 1988 with Allyson Cooper, Sampras Webster was also the NCAA doubles runner-up as a senior in 1991 with Kimberly Po. A four-time All-American, Sampras Webster was only the second player in UCLA history to obtain this status. She also won the 1989 and '91 Pac-10 doubles championship and the 1990 Rolex Regional doubles title. Sampras Webster completed her UCLA career ranked No. 3 nationally in doubles and No. 42 in singles. Team accomplishments were most important to Sampras Webster, who helped lead the Bruins to four straight NCAA top-three finishes.

As a professional, Sampras Webster's highest international singles ranking was No. 248, and her best in doubles was No. 142. Her professional

highlights include competing in both singles and doubles at the U.S. Open and Lipton Championships. She advanced to the U.S. Open second round in doubles and also competed in doubles at Wimbledon. She also won three satellite tournament titles and competed in Team Tennis for the Wichita Advantage in 1992.

Born in Potomac, Md., Sampras Webster moved to the Los Angeles area as a child and graduated from Palos Verdes High School. A top-three player in Southern California and among the top 10 in the country as a junior, Sampras Webster claimed the CIF doubles title as a freshman and the singles title as a senior in 1987. She capped her high school career by being named her school's Athlete of the Year.

The second-oldest of four children of Sam and Georgia Sampras, Stella considers the support of her entire family most significant. Younger brother Pete demonstrated his level of support for Stella and the Bruin program when he personally endowed a scholarship and assisted with the important fund-raising effort in Stella's first fall at the helm. Pete won a record 14 Grand Slam singles titles during his playing days, including seven Wimbledon championships.

Sampras Webster and her husband, Steve, were married on January 3, 2002 in Dana Point, Calif. They are the proud parents of twin girls Sophia and Savannah.



Stella and her husband Steve with twins Sophie (left) and Savannah.



## ► Rance BROWN

Associate Head Coach

19th Season

Long Beach State

Associate Head Coach Rance Brown is in his 19th season on the UCLA women's tennis coaching staff. He served as an assistant to Bill Zaima during the 1996 season, and has been Stella Sampras Webster's top assistant for 18 seasons. The 2000 and 2012 ITA National Assistant Coach of the Year, Brown was promoted to the position of associate head coach effective at the beginning of the 2008-09 season.

During Brown's tenure in Westwood UCLA has continually been among the top teams in the nation. In addition to NCAA titles in 2008 and 2014, the Bruins have finished runner-up at the NCAA Championships four times (2004, 2007, 2012, and 2015). The Bruins have made the NCAA Tournament in each of his 16 seasons as an assistant. Brown has especially excelled in the area of recruiting, bringing in a number of highly-ranked junior players to the program in the last several years. He also instrumental in the success of NCAA Singles Champion Keri Phebus, who recently became the first women's tennis player inducted into the UCLA Athletics Hall of Fame. Brown has been named the ITA Southwest Region Assistant Coach of the Year on five occasions (1999, 2000, 2007, 2010 and 2012). He spent the summer of 2008 as the coach of the USTA

Summer Collegiate Team, traveling to professional tournaments with some of the top women's college players in the nation.

In addition to his efforts with the UCLA program, Brown was among the first graduating classes of the USTA High Performance Coaches' Program. He currently works at the Riviera Country club, heading up the club's Elite Junior Tennis Program along with professional coach Erik Kortland. Prior to his appointment at Riviera, Brown headed up one of the most successful junior tennis programs in the country, serving as Director of Tennis at the Newport Beach Marriott Hotel and Tennis Club in Orange County for more than 20 years.

Brown received his Associate of Arts degree from Golden West Junior College, where he played for two years. He helped lead the team to two conference team titles and notched one conference doubles title. He played the 1981 season at Long Beach State and competed professionally at Challenger Level tournaments before devoting his time to coaching.



## ► Giancarlo "GC" CAVA

Volunteer Assistant Coach

2nd Season





## ► Catherine HARRISON

Senior • 5-5 • Right-Handed

Germantown, Tenn. / Laurel Springs Online Academy

### ► Career Singles Record

Year	Duals	Tournaments	Overall
2012-13	18-4	7-4	25-8
2013-14	18-4	10-3	28-7
2014-15	19-3	17-7	29-9
<b>Totals</b>	<b>55-11</b>	<b>27-13</b>	<b>82-24</b>

### ► Career Doubles Record

Year	Duals	Tournaments	Overall
2012-13	17-5	3-4	20-9
2013-14	24-1	11-6	35-7
2014-15	18-4	9-4	27-8
<b>Totals</b>	<b>59-10</b>	<b>23-14</b>	<b>82-24</b>

### ► 2014-15

Doubles All-American ... Second-Team All-Pac-12 selection ... Captured the Pac-12 singles title, beating No. 25 Klara Fabikova of Cal in straight sets ... Harrison and partner Kyle McPhillips posted a 25-7 record this season and have a career record together through three seasons of 66-15 ... In November, they won the doubles title at the USTA/ITA National Indoor Intercollegiate Championship and held the overall No. 1 ranking in the first edition of spring rankings in January, and later returned to No. 1 in March ... Harrison and McPhillips finished the season with the No. 5 final ranking, their second straight Top 10 final ranking ... In singles play, Harrison notched a 29-9 record, going 12-3 in the No. 4 position and 10-0 in conference play ... Blanked Cal's Zsofi Susanyi, ranked 20th at the time, and USC's Sabrina Santamaria, then ranked No. 21 ... Earned Pac-12 All-Academic honorable mention honors.

### ► 2013-14

Earned All-America honors in doubles ... Ranked second on the team in doubles victories, finishing the season with a 37-5 record ... Played mostly with fellow sophomore Kyle McPhillips ... The duo were the Bruins' No. 2 doubles team for most of the season, going 21-2 in dual matches ... Teamed with Jennifer Brady to claim the doubles title at the USTA/ITA Southwest Regional Championships in San Diego ... With the win, earned a place at the USTA/ITA National Indoor Intercollegiate Championships in New York, where the duo reached the quarterfinals ... Teamed mostly with McPhillips after the Intercollegiate Indoors ... Ended the season ranked No. 8 nationally in doubles (w/McPhillips) ... The duo climbed to as high as No. 6 during the regular season ... Played mostly at No. 5 singles ... Went 18-4 in dual matches and 28-7 overall ... Ranked No. 81 in singles to end the year ... Ranked as high as No. 44 (Feb. 11) ... Consolation singles champion at the Freeman Memorial Championships in Las Vegas, Nev.

### ► 2012-13

One of three 20-match winners on the team, ending the season with a 25-8 overall record ... Was 18-4 in dual matches playing mostly at the No. 5 position where she was 14-2 ... Her 18 dual-match wins led the team ... Clinched the team's 4-3 victory over Pepperdine on Feb. 28 in Malibu, downing Megan Moore, 6-1, 7-5 in the deciding match ... Posted a 4-3 record against nationally ranked opponents ... Highest ranked win of the season came over No. 19 Zoe Scandalis of USC in the quarterfinals of the National Collegiate Tennis Classic ... Also had wins over No. 92 Stephanie Wagner (Miami) and No. 51 Ellen Tsay (Stanford) ... Posted a 4-0 singles

record in UCLA's run to the semifinals of the NCAA Team Championships in Champaign, Ill. ... Notched a 20-9 overall doubles record on the season ... Was 17-5 in dual matches, teaming mostly with fellow freshman Kyle McPhillips at court No. 3.

### ► High School/Juniors

Ranked as the No. 10 recruit in the class of 2012 according to Tennis-Recruiting.net ... Ranked a career-high No. 104 in the ITF World Junior Rankings ... Participated in three of the four Junior Grand Slams, seeing action at the Australian Open, Wimbledon and U.S. Open ... Signed with UCLA while in London for Wimbledon ... Quarterfinalist in doubles (w/ Samantha Crawford) at the 2011 U.S. Open ... Southern Sectionals 18s Singles Champion in 2010 ... Atlanta ITF Champion in 2011 ... Orange Bowl singles finalist in 2011 (16s) ... Silver Ball winner at the Spring Nationals in 2011 ... Bronze Ball winner at the USTA National Clay Courts in 2010 ... National Open winner in three age divisions (14s, 16s and 18s) ... Captured a Gold Ball in doubles with Hannah King at the 2010 USTA National Hardcourts ... Has also played in a number of professional events on the ITF Women's Circuit, reaching the finals at Amelia Island (10k) in 2010 ... Received a wild card to compete in the main draw at the 2011 Cellular South Cup, an annual event on the WTA Tour ... Graduated from Laurel Springs Online Academy.

### ► Personal

Full name is Catherine Elizabeth Frances Harrison ... Born on April 9, 1994 in Memphis, Tenn. ... Parents are Kent and Jan ... Admires tennis professionals Roger Federer and Brian Baker ... Enjoys reading and shopping in her spare time ... major is anthropology.



## ► Dominika MATKOWSKA

Senior • 5-5 • Right-Handed  
Szczecin, Poland / Adam Asnyk

### ► High School/Juniors

Polish Regional Champion in both singles and doubles for the 14s and 16s age divisions ... Quarterfinalist in both singles and doubles at the Polish Junior Championships (16s division) ... Played club tennis for SKT Szczecin ... Helped SKT Szczecin reach the finals of the Polish Club Championships in 2011 ... Attended high school at Adam Asnyk in Szczecin from 2009-12.

### ► Personal

Born on July 8, 1993 in Szczecin, Poland ... Parents are Zbigniew and Yolanta ... Older brother, Marcin, was a member of the UCLA men's tennis team from 2001-03, earning All-America honors in 2002 ... He turned professional following his junior year and is one of the top doubles players on the ATP World Tour, cracking the top 10 of the world rankings ... He has also represented Poland in a number of Davis Cup competitions ... Dominika enjoys reading books, photography and traveling in her spare time ... major is economics.



## ► Laura LUCA

Senior • 5-3 • Right-Handed  
Bucharest, Romania / Mihai Viteazul National College

### ► High School/Juniors

Attended Mihai Viteazul National College from 2009-2013 ... Played under coach Dan Manciu ... Ranked in the top 30 nationally U12 through U18 ... Was a U18 Regional Champion ... Played Club Tennis for CSA Steaua Bucuresti ... Played several Junior ITF Tournaments ... At age 18, began playing events on the ITF Women's Circuit ... A member of the UCLA Club Tennis Competitive Team prior to joining the UCLA varsity squad.

### ► Personal

Full name is Laura Margareta Luca ... Born on October 15, 1994 in Bucharest, Romania. ... Parents are Laurentiu and Adina Luca ... Has an older sister, Ana Patricia ... Working toward a double major in economics and political science.

# ► Kyle McPHILLIPS

Senior • 5-5 • Right-Handed

Willoughby, Ohio / Andrews Osborne Academy



## ► Career Singles Record

Year	Duals	Tournaments	Overall
2012-13	18-4	7-4	25-8
2013-14	16-4	4-5	20-9
2014-15	10-6	10-5	20-11
<b>Totals</b>	<b>44-14</b>	<b>21-14</b>	<b>65-28</b>

## ► Career Doubles Record

Year	Duals	Tournaments	Overall
2012-13	17-5	3-4	20-9
2013-14	24-1	2-2	26-3
2014-15	17-4	10-5	27-9
<b>Totals</b>	<b>58-10</b>	<b>15-11</b>	<b>73-21</b>

## ► 2014-15

Doubles All-American for the second straight season ... McPhillips and partner Catherine Harrison posted a 25-7 record this season and have a career record together through three seasons of 66-15 ... In November, they won the doubles title at the USTA/ITA National Indoor Intercollegiate Championship and held the overall No. 1 ranking in the first edition of spring rankings in January, and later returned to No. 1 in March ... McPhillips and Harrison finished the season with the No. 5 final ranking, their second straight Top 10 final ranking ... The duo went 9-1 playing in the No. 2 position and was 8-5 versus ranked opponents ... In singles, McPhillips recorded a 20-11 mark, playing primarily in the No. 3 spot (7-3) ... Ranked as high as No. 27 in singles ... Took down two top-20 opponents (No. 4 Carol Zhao of Stanford and No. 17 Lorraine Guillermo of Pepperdine) en route to taking home the singles title at the National Collegiate Tennis Classic in January ... All-Pac-12 and Pac-12 All-Academic honorable mention selection.

## ► 2013-14

Earned All-America honors in doubles ... Honorable mention All-Pac-12 selection ... Won the clinching match at No. 3 singles to give UCLA a 4-3 victory over North Carolina in the NCAA Championship match in Athens, Ga. ... Defeated UNC's Caroline Price, 6-4, 3-6, 6-3 in that contest ... Named to the NCAA All-Tournament Team at No. 2 doubles with partner Catherine Harrison ... Participated in the NCAA Doubles Championships (w/Harrison), falling in the first round ... Ended the season with a 20-9 overall singles record ... Played primarily at the Nos. 3 and 4 positions in the lineup ... Went 16-4 in dual matches ... Finished the year ranked No. 38 nationally in singles ... Ranked as high as No. 11 during the year (preseason) ... Went 26-3 in doubles ... Played at the No. 2 spot in the lineup with Harrison, going 21-1 ... Ended the season ranked No. 8 nationally in doubles (w/Harrison) ... The duo climbed to as high as No. 6 during the regular season ... Honorable mention All-Pac-12 Academic selection.

## ► 2012-13

Pac-12 Freshman of the Year ... Second-Team All-Pac-12 selection ... Singles All-American ... Captured the singles title at the Pac-12 Championships, downing Stanford's Krista Hardebeck, 6-1, 6-0 in the final ... Participated in the singles draw at the NCAA Championships ... Advanced to the second round before falling to Kansa State's Petra Niedermayerova in three sets ... That loss snapped her 14-match winning streak ... Ended the year as UCLA's second-highest ranked singles player at No. 17 ... Posted the most singles victories on the team with 34 ... Was 17-4 in dual matches ... Saw time at the Nos. 1-3 positions ... Was undefeated at court Nos. 1 and 2, going 3-0 at the No. 1 spot and 9-0 at the

No. 2 position ... Registered a 15-7 record against ranked opponents ... Clinched UCLA's 4-3 victory over No. 7 Cal on Feb. 22 at the LATC, downing Klara Fabikova, 6-3, 4-6, 7-3 at court No. 3 ... Named Pac-12 Player of the Week following that win ... Also led the team in doubles wins, going 26-11 overall ... Played mostly with Catherine Harrison at court No. 3 where the duo was 14-4 ... Teamed with Skylar Morton to take home the doubles title at the USTA Collegiate Invitational, downing Michigan's Emina Bektas and Brooke Bolender, 9-7 in the final.

## ► High School/Juniors

Listed as the No. 3 overall recruit in the class of 2012 according to TennisRecruiting.net ... Held the No. 1 ranking in the United States in every age division ... Earned a career-high combined ITF World Junior Ranking of No. 11 in Dec. of 2012 ... Career junior ITF singles record of 72-31 ... Was 74-29 in ITF junior doubles matches ... Has played in all four Junior Grand Slams, seeing action at the Australian Open, Wimbledon, Roland Garros and U.S. Open ... Best Grand Slam singles results came at the Australian Open (2012) and U.S. Open (2011), where she reached the round of 16 ... Best doubles result came at the 2011 U.S. Open where she reached the semifinals (w/Nicole Gibbs) ... Finalist in doubles (w/Jennifer Brady) at Roehampton in 2012 ... Won six-straight matches to claim the title at the 2011 Easter Bowl, downing Gabrielle Andrews in the final 6-4, 6-4 ... Has also played in a number of professional tournaments as an amateur on the ITF Women's Circuit ... Won five straight-set matches to claim the singles title at a women's pro circuit event in Cleveland ... Also reached the quarterfinals in singles and the semifinals in doubles (w/Nicole Melichar) in Evansville ... Graduated from the Andrews Osborne Academy in Ohio.

## ► Personal

Born on April 5, 1994 in Willoughby, Ohio ... Parents are Tom and Stephanie ... Older siblings are Sean and Kristen ... Admires Roger Federer ... Hobbies include swimming, waterskiing, windsurfing and reading ... major is political science.



# ► Kelly SHAFFER

Junior • 5-11 • Right-Handed  
San Diego, Calif. / Francis W. Parker



## ► Career Singles Record

Year	Duals	Tournaments	Overall
2013-14	2-1	0-0	2-1
2014-15	2-1	2-5	4-6
<b>Totals</b>	<b>4-2</b>	<b>2-5</b>	<b>6-7</b>

## ► Career Doubles Record

Year	Duals	Tournaments	Overall
2013-14	1-0	0-1	1-1
2014-15	0-1	0-2	0-3
<b>Totals</b>	<b>1-1</b>	<b>0-3</b>	<b>1-4</b>

## ► 2014-15

Played mostly in the fall, posting a 4-6 singles mark and 0-3 doubles record overall.

## ► 2013-14

Late addition to the team, joining the Bruins in January upon graduating from high school ... Posted a 2-1 singles record in dual match play ... Played all three of her matches at No. 6 singles, picking up wins against Loyola Marymount and UC Irvine ... Also saw action against TCU ... Also picked up a win against LMU at No. 3 doubles, teaming with Robin Anderson.

## ► High School/Juniors

Three-time All-CIF performer at The Bishop's School in La Jolla, Calif. ... Only played three years of high school tennis after being home schooled her freshman year ... Listed as a four-star recruit according to TennisRecruiting.net ... Ended her high school career with a 103-10 overall singles record ... Twice named to the All-Academic Team ... Reached the semifinals in her section's singles tournament ... Received a wild card to compete in the qualifying draw at the WTA Tour's Southern California Open in Carlsbad in 2013, falling to former Florida standout Allie Will, who was ranked top-300 in the world at the time ... Captured a USTA Silver Ball for reaching the singles final at the National Open Hard Court Championships San Diego in 2013 ... Also won a Gold Ball in mixed doubles at the National Open Grass Court championships in Newport, R.I.

## ► Personal

Full name is Kelly Christine Lee Shaffer ... Born on Feb. 21, 1996 in La Jolla, Calif. ... Parents are Jim and Tanya Shaffer ... Father played baseball and football at UC Santa Barbara ... Mother is a former professional ice skater ... Enjoys cooking and hanging out with friends and family ... Is fluent in French ... Lists playing in the Southern California Open as her greatest athletic thrill ... major is human biology and society.







## ► Eliza DAY

Sophomore • 5-1 • Right-Handed  
Newport Beach, Calif. / JSerra Catholic

### ► High School/Juniors

Three-year letterwinner for coach Kirk Oranhood at JSerra Catholic High School in San Juan Capistrano, Calif. ... Team captain ... Trinity League Doubles Champion ... Earned both the Rookie of the Year Award and the Coaches Award.

### ► Personal

Full name is Eliza Jane Day ... Born on July 4, 1996 in Newport Beach, Calif. ... Parents are Daniel and Jane ... Mother also attended UCLA ... Younger brother is Danny.



## ► Terri FLEMING

Sophomore • 5-6 • Right-Handed  
Atlanta, Ga. / Kaplan K12

### ► Career Singles Record

Year	Duals	Tournaments	Overall
2014-15	12-3	9-6	21-9

### ► Career Doubles Record

Year	Duals	Tournaments	Overall
2014-15	5-7	2-5	7-12

### ► 2014-15

The freshman posted an impressive 21-9 singles mark, playing primarily in the No. 5 spot (4-2) and at No. 6 (7-1) ... Pac-12 Player of the Week (Jan. 26) ... Downed USC's Gabby Smith, ranked 85th nationally, in straight sets in April ... In doubles play, Fleming was ranked as high as No. 46 with partner Chanelle Van Nguyen ... Had a 7-12 overall mark in doubles, playing with seven different partners.

### ► High School/Juniors

Blue Chip recruit (No. 9 nationally) in the class of 2014 by TennisRecruiting.net ... Listed as the No. 1 recruit in the state of Georgia ... Top 500 in the ITF Junior World Rankings ... Has played a number of events on the ITF Junior Circuit, including the Eddie Herr International Junior Championships, Easter Bowl and Orange Bowl ... Semifinalist in singles at the Eddie Herr ... Semifinalist in both singles and doubles (w/Mira Ruder-Hook) in South Carolina ... Quarterfinalist in singles and doubles (w/Claudia Wiktorin)

in Atlanta ... Singles finalist at the USTA Clay Courts in Memphis, Tenn. ... Ranked in the top 10 nationally in the USTA Girls' 18s rankings ... Has also played events on the ITF Women's Circuit ... Advanced through the qualifying and into the main draw in Hilton Head, South Carolina where she reached the semifinals in singles ... Member of the USTA's Southern Section team ... Has helped Georgia to four titles at the Southern Cup ... Won the Southern Championships in doubles (18s) with Laura Patterson ... Did not play high school tennis ... Home schooled.

### ► Personal

Full name is Terri Chanelle Fleming ... Born on July 23, 1996 in Florence, South Carolina ... Has lived in Georgia since the age of one ... Parents are Gywen and Terry ... Three brothers are Travis, Ryan and Nick ... Admires basketball player Kobe Bryant and tennis star Roger Federer ... Enjoys dancing and singing in her free time.



## ► Maia MAGILL

Sophomore • 5-11 • Right-Handed

Studio City, Calif. / Laurel Springs Online Academy

### ► Career Singles Record

Year	Duals	Tournaments	Overall
2014-15	0-0	4-5	4-5

### ► Career Doubles Record

Year	Duals	Tournaments	Overall
2014-15	0-1	0-5	0-6

### ► 2014-15

The freshman played mostly during the fall campaign ... Recorded a 4-5 singles mark and was 0-6 in doubles play.

### ► High School/Juniors

Blue Chip recruit in the class of 2014 by TennisRecruiting.net ... Listed as high as No. 9 nationally ... Consistently ranked among the top 5 players in the Southern California Section ... Has played a number of ITF events on the junior circuit, including the International Spring Championships, Atlanta, South Carolina, Eddie Herr and Orange Bowl ... Semifinalist in doubles (w/ Elizabeth Profit) at the USTA Clay Courts (16s) ... Shoulder injury sidelined her for much of the first year 18s ... Primarily

focused on professional events in her last year of 18s ... Quarterfinalist in singles and semifinalist in doubles (w/Alexandra Morozova) at a 10k in Saint Martin (Guadeloupe) ... Also reached the round of 16 in singles and the quarterfinals in doubles (w/Morozova) in Petit Bourg (Guadeloupe) ... Did not attend a traditional high school in order to focus on tennis ... Completed her independent studies from Laurel Springs Online Academy.

### ► Personal

Full name is Maia Anastasia Magill ... Born on Sept. 21, 1996 in Los Angeles ... Parents Tim and Donna are both architects ... Older sister, Cleo, is a professional ballet dancer ... Admires Kim Clijsters and Roger Federer.





## ► McKenzie PURCIFULL

Sophomore • 5-9 • Right-Handed  
Newport Beach, Calif. / Corona del Mar

### ► High School/Juniors

Four-year letterwinner for coach Brian Ricker at Corona del Mar High School in Newport Beach, Calif. ... Started every match at No. 1 doubles ... Earned All-America honors ... First-Team All-Pacific Coast League selection in 2013 ... Two-year team captain ... Three-year team MVP ... Earned Daily Pilot Athlete of the Week honors.

### ► Personal

Full name is McKenzie Ann Purcifull ... Born on April 12, 1996 in Newport Beach, Calif. ... Parents are Robert and Renee ... Younger brother is Robert ... Uncle played water polo at UCLA ... Interested in majoring in either communications or psychology ... Enjoys shopping in her spare time.



## ► Kristin WILEY

Sophomore • 5-8 • Right-Handed  
Fort Lauderdale, Fla. / Broward Virtual School

### ► Career Singles Record

Year	Duals	Tournaments	Overall
2014-15	10-3	3-4	13-7

### ► Career Doubles Record

Year	Duals	Tournaments	Overall
2014-15	10-7	2-4	12-11

### ► 2014-15

Split time between No. 5 and No. 6 in singles, compiling an overall record of 13-7 ... Was 7-2 in conference play ... In doubles, Wiley was 12-11, playing mostly in the No. 3 position (10-7) ... Wiley was 9-6 with partner Van Nguyen, and took down No. 37 Lohan/Zhang of Miami, 6-4, in February.

### ► High School/Juniors

Blue Chip recruit in the class of 2014 according to TennisRecruiting.net ... Ranked No. 1 in the state of Florida ... Also listed as one of the top 10 players in the nation (USTA) ... Focused on ITF Women's Circuit events during her last year of the 18s ... Played events in Rancho Santa Fe, Calif. and Evansville, Ind. ... Best ITF result came in Hilton Head, S.C. where she won three qualifying matches to reach the main draw ... Played two years of high school tennis, as a freshman and sophomore, at Cardinal Gibbons High School in Fort Lauderdale, Fla. ... Class 2A Individual State Singles Champion as a sophomore in 2012 ... High school MVP ... Miami Herald and Sun Sentinel High

School Player of the Year in 2012 ... Home schooled as a junior and senior and did not play high school tennis ... Trained at the Harold Solomon Tennis Institute in Fort Lauderdale, Fla. ... Captured the doubles title (w/Bennett Dunn) at the 65th USTA Florida Bobby Curtis Junior State Doubles Championships in Altamonte Springs, Fla. ... Seeded No. 17 in singles at the 2013 Girls' 18s National Championships, reaching the fourth round ... Was also seeded No. 9 in doubles (w/Caroline Turner) at the National Championships ... Two-year member of Florida's Junior Fed Cup team.

### ► Personal

Full name is Kristin Parker Wiley ... Born on November 22, 1995 in Fort Lauderdale, Fla. ... Parents are Doug and Jennifer ... Mother played tennis at Clemson and served as her coach for much of her junior career ... Older sister, Laura, plays tennis at Columbia ... Younger sister, Katherine, is also a tennis player ... Admires tennis professional Maria Sharapova ... Enjoys reading and running in her spare time.



## ► Alaina MILLER

Freshman • 5-6 • Right-Handed  
Saratoga, Calif. / Laurel Springs Online Academy

### ► High School/Juniors

Miller won the 2014 International Spring Championship ... She was a member of the NorCal Maze Cup Team that won in 2013 and 2014 ... The Saratoga product was the 14s, 16s, and 18s NorCal Sectional winner.

### ► Personal

Full name is Alaina Susan Miller ... She is the daughter of Randolph and Aubyn Miller ... Has an older brother, Raleigh ... Says she started playing tennis "because I saw my brother playing and I made it my mission to beat him, then somewhere along the way I fell in love with the game" ... Admires professional tennis player Ana Ivanovic.



## ► Cameron PATTERSON

Freshman • 5-8 • Right-Handed  
Los Angeles, Calif. / Marlborough School

### ► High School/Juniors

Four-year letterwinner for coach Shaina Zaidi at Marlborough School in Los Angeles, Calif. ... Three-time first-team All-League member ... Earned team MVP honors her junior and senior years ... Sunshine League Champion her junior season.

### ► Personal

Full name is Cameron Nicole Patterson ... Born on January 1, 1997 in Los Angeles, Calif. ... Parents are Worthy and Marybeth ... Admires Serena Williams and Stephen Curry ... Has an older brother, Worthy



## ► 2015 Schedule/Results

Overall Record: 23-5 | Pac-12 Record/Finish:

8-2/3rd

Final ITA Ranking: No. 3 (May 26)

Date	Opponent	Score
Jan. 24	MARSHALL%	W, 4-0
Jan. 25	#64 KANSAS STATE%	W, 4-0
Jan. 29	LOYOLA MARYMOUNT	W, 7-0
Feb. 6	vs. #26 Kentucky^	W, 4-0
Feb. 7	vs. #9 Georgia^	L, 2-4
Feb. 8	vs. #12 Miami^	W, 4-0
Feb. 14	vs. #17 TCU	W, 4-1
Feb. 20	at #41 Saint Mary's	W, 6-1
Feb. 21	at #5 CAL	L, 3-4
Feb. 27	at #18 Pepperdine	W, 4-3
March 4	#3 USC	W, 4-3
March 7	at #4 Baylor	W, 4-3
March 13	at Washington State*	W, 7-0
March 20	#3 CAL*	L, 3-4
March 21	#10 STANFORD*	W, 5-2
March 27	at #44 Washington*	W, 6-1
March 28	at #56 Oregon*	W, 5-2
March 29	OREGON*	W, 4-0
April 3	at #23 ASU*	W, 4-3
April 4	at #41 Arizona*	W, 7-0
April 10	#65 COLORADO*	W, 7-0
April 11	#59 UTAH*	W, 7-0
April 16	at #2 USC*	L, 3-4

## NCAA Regionals (at Los Angeles, CA)

May 9	IDAHO (1st Rd.)	W, 4-0
May 10	#26 NORTHWESTERN (2nd Rd.)	W, 4-0

## NCAA Championships (at Athens, Ga.)

May 15	vs. #10 Texas A&M (Rd. of 16)	W, 4-1
May 17	vs. #2 UNC (Quarterfinal)	W, 4-1
May 18	vs. #7 Georgia (Semifinal)	W, 4-1
May 20	vs. #4 Vanderbilt (Final)	L, 2-4

\* - Pac-12 Conference Match | % - Team Indoor Qualifying (Los Angeles)

^ - USTA/ITA National Team Indoors (Charlottesville, VA)

## ► All-Pac-12 Honors

## First Team

Robin Anderson, UCLA  
Taylor Davidson, STAN  
Klara Fabikova, CAL  
Maegan Manasse, CAL  
Giuliana Olmos, USC  
Carol Zhao, STAN

## Second Team

Caroline Doyle, STAN  
Catherine Harrison, UCLA  
Desirae Krawczyk, ASU  
Sabrina Santamaria, USC  
Zoe Scandalis, USC  
Chanelle Van Nguyen, UCLA

## Honorable Mention

Tereza Bekerova, UTAH; Jennifer Brady, UCLA;  
Lauren Marker, ARIZ; Kyle McPhillips, UCLA;  
Denise Starr, CAL; Zsofi Susanyi, CAL

## YEAR-END AWARDS

Player of the Year: Robin Anderson, UCLA  
Doubles Team of the Year: Carol Zhao/Taylor Davidson, STAN

Coach of the Year: Richard Gallien, USC  
Freshman/Newcomer of the Year: Madison Westby, USC

## ► Singles Records

Player	#1	#2	#3	#4	#5	#6	Duals	Tour.	Overall
Robin Anderson	19-2	-	-	-	-	-	19-2	8-1	27-3
Jennifer Brady	-	5-2	4-0	-	-	-	9-2	9-2	18-4
Terri Fleming	-	-	-	1-0	4-2	7-1	12-3	9-6	21-9
Catherine Harrison	-	-	4-0	12-3	3-0	-	19-3	10-6	29-9
Maia Magill	-	-	-	-	-	-	0-0	4-5	4-5
Kyle McPhillips	-	2-1	7-3	1-2	-	-	10-6	10-5	20-11
Kaitlin Ray	-	-	0-1	5-1	4-3	1-2	10-7	13-5	23-12
Kelly Shaffer	-	-	-	-	-	2-1	2-1	2-5	4-6
Chanelle Van Nguyen	2-1	9-5	3-2	-	-	-	14-8	10-4	24-12
Kristin Wiley	-	-	-	-	4-1	6-2	10-3	3-4	13-7
<b>TOTALS</b>	<b>21-3</b>	<b>16-8</b>	<b>18-6</b>	<b>19-6</b>	<b>15-6</b>	<b>16-6</b>	<b>105-35</b>	<b>78-43</b>	<b>183-78</b>

## ► Doubles Records

Players	#1	#2	#3	Duals	Tour.	Overall
Magill/Wiley	-	-	-	0-0	0-1	0-1
Fleming/Van Nguyen	-	-	1-2	1-2	1-1	2-3
Harrison/McPhillips	8-3	9-1	-	17-4	8-3	25-7
Magill/Shaffer	-	-	-	0-0	0-2	0-2
Magill/Ray	-	-	-	0-0	0-1	0-1
McPhillips/Wiley	-	-	-	0-0	2-1	2-1
Fleming/Harrison	-	1-0	-	1-0	1-1	2-1
Fleming/McPhillips	-	-	-	0-0	0-1	0-1
Fleming/Wiley	-	-	1-2	1-2	0-1	1-3
Anderson/Brady	11-4	2-0	-	13-4	1-1	14-5
Anderson/Fleming	-	2-2	-	2-2	0-0	2-2
Van Nguyen/Wiley	-	-	9-5	9-5	0-1	9-6
Ray/Van Nguyen	-	-	1-0	1-0	0-0	1-0
Anderson/Van Nguyen	-	3-1	-	3-1	0-0	3-1
Fleming/Shaffer	-	-	0-1	0-1	0-0	0-1
Fleming/Magill	-	-	-	0-0	0-1	0-1
Magill/Van Nguyen	-	-	0-1	0-1	0-0	0-1
<b>TOTALS</b>	<b>19-7</b>	<b>17-4</b>	<b>13-11</b>	<b>49-22</b>	<b>13-15</b>	<b>62-37</b>

## ► Indiv. Doubles Records

Robin Anderson	19-8
Jennifer Brady	14-5
Terri Fleming	7-12
Catherine Harrison	27-8
Maia Magill	0-6
Kyle McPhillips	27-9
Kaitlin Ray	1-1
Kelly Shaffer	0-3
Chanelle Van Nguyen	15-11
Kristin Wiley	12-11

## ► vs. Ranked Singles Opp.

Robin Anderson	19-3
Jennifer Brady	9-3
Terri Fleming	2-4
Catherine Harrison	9-5
Maia Magill	0-1
Kyle McPhillips	6-7
Kaitlin Ray	4-7
Kelly Shaffer	0-0
Chanelle Van Nguyen	13-10
Kristin Wiley	0-2

## ► Final Pac-12 Standings

Team	Pac-12 (Pct.)
1. USC*	10-0 (.000)
2. California	9-1 (.900)
3. UCLA	8-2 (.800)
4. Stanford	7-3 (.700)
5. Arizona State	6-4 (.600)
6. Oregon	4-6 (.400)
Utah	4-6 (.400)
7. Arizona	3-7 (.300)
Washington	3-7 (.300)
10. Colorado	1-9 (.100)
11. Washington State	0-10 (.000)



\* Receives conference's automatic bid to NCAA Tournament

## ► ITA Team Rankings

Final (May 26)	
1. Vanderbilt	13. Michigan
2. USC	14. Alabama
3. UCLA	15. Miami
4. UNC	16. Texas Tech
5. Georgia	17. TCU
6. Florida	18. Clemson
7. California	19. Duke
8. Baylor	20. Georgia Tech
9. Virginia	21. Ohio State
10. Texas A&M	22. Pepperdine
11. Stanford	23. LSU
12. Oklahoma St.	24. Mississippi
	25. Kentucky



## 2015 Match-By-Match Results

**#1 UCLA 4, Marshall 0****Jan 24, 2015 at Los Angeles, CA (Los Angeles Tennis Center)****Doubles**

1. Anderson/Jennifer Brady (UCLA) def. Pomyatinskaya/Turhan (MAR) 6-0
2. #1 Catherine Harrison/McPhillips (UCLA) def. Bogicevic/Broomfield (MAR) 6-3
3. Van Nguyen/Wiley (UCLA) vs. Morales/Silver (MAR) 4-2, unfinished

**Singles**

1. #2 Robin Anderson (UCLA) vs. Derya Turhan (MAR) 6-2, 4-1, unfinished
2. #3 Chanelle Van Nguyen (UCLA) def. Maddie Silver (MAR) 6-0, 6-0
3. Kyle McPhillips (UCLA) vs. Kai Broomfield (MAR) 6-3, 3-2, unfinished
4. #79 Kaitlin Ray (UCLA) def. Anna Pomyatinskaya (MAR) 6-0, 6-4
5. Terri Fleming (UCLA) def. Marija Bogicevic (MAR) 6-0, 6-0
6. Kelly Shaffer (UCLA) vs. Rachael Morales (MAR) 6-3, 2-3, unfinished

**#1 UCLA 4, #64 Kansas State 0****Jan 25, 2015 at Los Angeles, CA (Los Angeles Tennis Center)****Doubles**

1. Robin Anderson/Brady (UCLA) def. Sara Castellano/Juhasz (KS) 6-2
2. #1 Catherine Harrison/McPhillips (UCLA) vs. Bago/St. Hill (KS) 5-2, unfinished
3. #46 Fleming/Van Nguyen (UCLA) def. Nizzi/Panaite (KS) 6-1

**Singles**

1. Jennifer Brady (UCLA) vs. Palma Juhasz (KS) 6-3, 4-2, unfinished
2. #3 Chanelle Van Nguyen (UCLA) vs. Iva Bago (KS) 6-2, 3-2, unfinished
3. Kyle McPhillips (UCLA) def. Maria Panaite (KS) 6-0, 6-1
4. Terri Fleming (UCLA) def. Livia Cirnu (KS) 6-1, 6-1
5. Kristin Wiley (UCLA) vs. Amina St. Hill (KS) 6-4, 2-1, unfinished
6. Kelly Shaffer (UCLA) def. Riley Nizzi (KS) 6-0, 6-1

**#1 UCLA 7, Loyola Marymount 0****Jan 29, 2015 at Los Angeles, CA (Los Angeles Tennis Center)****Doubles**

1. #1 Harrison/McPhillips (UCLA) def. Kouyoumjian/Perez (LMU) 6-2
2. Anderson/Terri Fleming (UCLA) def. Crespo/Grossman (LMU) 6-3
3. Van Nguyen/Kristin Wiley (UCLA) def. Piller/Romeka (LMU) 6-3

**Singles**

1. #2 Robin Anderson (UCLA) def. Jessica Perez (LMU) 6-4, 6-2
2. #3 Chanelle Van Nguyen (UCLA) def. Andrea Crespo (LMU) 6-0, 6-0
3. Kyle McPhillips (UCLA) def. Ellie Grossman (LMU) 6-2, 6-1
4. Catherine Harrison (UCLA) def. Kristine Kouyoumjian (LMU) 6-1, 6-2
5. #79 Kaitlin Ray (UCLA) def. Anna Romeka (LMU) 6-1, 6-1
6. Kelly Shaffer (UCLA) def. Lisa Piller (LMU) 6-2, 6-1

**#1 UCLA 4, #26 Kentucky 0****Feb 6, 2015 at Charlottesville, VA (Boar's Head Sports Club)****Doubles**

1. #1 Harrison/McPhillips (UCLA) def. Adachi/Sutjiadi (UK) 6-4
2. Anderson/Fleming (UCLA) def. Taylor Lederman/Ravita (UK) 7-5
3. Van Nguyen/Kristin Wiley (UCLA) vs. E. Morin-Kougoucheff/Lewis (UK) 5-6, unfinished

**Singles**

1. #2 Robin Anderson (UCLA) def. Nadia Ravita (UK) 6-0, 6-1
2. #3 Chanelle Van Nguyen (UCLA) vs. #125 Aldila Sutjiadi (UK) 3-6, 5-6, unfinished
3. Kyle McPhillips (UCLA) def. Kelsey Dieters (UK) 6-1, 6-2
4. Catherine Harrison (UCLA) vs. Mami Adachi (UK) 7-6, 3-3, unfinished
5. #79 Kaitlin Ray (UCLA) vs. Kirsten Lewis (UK) 3-6, 6-4, 1-0, unfinished
6. Terri Fleming (UCLA) def. Caterina Brunamonti (UK) 7-6(3), 6-1

**#9 Georgia 4, #1 UCLA 2****Feb 7, 2015 at Charlottesville, VA (Boar's Head Sports Club)****Doubles**

1. #1 Catherine Harrison/McPhillips (UCLA) def. Herring/Perez (UGA) 6-1
2. Garcia/Shaffer (UGA) def. Anderson/Fleming (UCLA) 6-3
3. Brinson/King (UGA) def. Van Nguyen/Wiley (UCLA) 6-2

**Singles**

1. #2 Robin Anderson (UCLA) vs. #19 Lauren Herring (UGA) 1-6, 7-6, 3-4, unfinished
2. Ellen Perez (UGA) def. #3 Chanelle Van Nguyen (UCLA) 4-6, 6-1, 6-3
3. Kyle McPhillips (UCLA) def. Kennedy Shaffer (UGA) 6-3, 7-6(2)
4. #79 Kaitlin Ray (UCLA) def. #83 Silvia Garcia (UGA) 7-5, 6-2
5. #91 Hannah King (UGA) def. Terri Fleming (UCLA) 1-6, 6-4, 6-4
6. Caroline Brinson (UGA) def. Kristin Wiley (UCLA) 6-0, 6-2

**#1 UCLA 4, #12 Miami 0****Feb 8, 2015 at Charlottesville, VA (Boar's Head Sports Club)****Doubles**

1. #1 Harrison/McPhillips (UCLA) def. #8 Wagner/Lileikite (UM) 7-6
2. #15 Albuquerque/Clementina Riobueno (UM) def. Anderson/Fleming (UCLA) 6-2
3. Van Nguyen/Kristin Wiley (UCLA) def. #37 Lohary/Zhang (UM) 6-4

**Singles**

1. #2 Robin Anderson (UCLA) def. #7 Stephanie Wagner (UM) 6-2, 6-0
2. #3 Chanelle Van Nguyen (UCLA) vs. #39 Sinead Lohan (UM) 1-6, 5-4, unfinished
3. Kyle McPhillips (UCLA) def. #94 Lina Lileikite (UM) 6-2, 6-4
4. Catherine Harrison (UCLA) vs. #58 Wendy Zhang (UM) 6-2, 2-5, unfinished
5. #79 Kaitlin Ray (UCLA) def. Monique Albuquerque (UM) 6-1, 6-3
6. Terri Fleming (UCLA) vs. Silvia Fuentes (UM) 6-1, 4-5, unfinished

**#4 UCLA 4, #17 TCU 1****Feb 14, 2015 at Los Angeles, CA (Los Angeles Tennis Center)****Doubles**

1. #2 Harrison/McPhillips (UCLA) def. Arantekin/Tan (TCU) 6-3
2. Fleming/Kristin Wiley (UCLA) vs. Dubavets/Pereira (TCU) 4-5, unfinished
3. Ray/Van Nguyen (UCLA) def. Kadzhaya/Parajova (TCU), by default

**Singles**

1. #9 Chanelle Van Nguyen (UCLA) def. #76 Stefanie Tan (TCU) 6-4, 6-0
2. #31 Kyle McPhillips (UCLA) def. #47 Simona Parajova (TCU) 3-1, retired
3. #101 Kaitlin Ray (UCLA) vs. Sofiko Kadzhaya (TCU) 7-6(2), 3-1, unfinished
4. Catherine Harrison (UCLA) vs. Palina Dubavets (TCU) 7-6, 2-2, unfinished
5. Terri Fleming (UCLA) def. Seda Arantekin (TCU) 6-1, 6-2
6. Alexis Pereira (TCU) def. Kelly Shaffer (UCLA) 6-4, 6-3

**#4 UCLA 6, #41 Saint Mary's 1****Feb 20, 2015 at Moraga, CA (Korth Tennis Complex)****Doubles**

1. #2 Harrison/McPhillips (UCLA) def. McCord/Parminder Kaur (SMC) 8-6
2. Flores/Mary-Anne Jessup (SMC) vs. Fleming/Wiley (UCLA) 5-7, unfinished
3. Ray/Van Nguyen (UCLA) def. Pawid/Manji (SMC) 8-6

**Singles**

1. #9 Chanelle Van Nguyen (UCLA) def. #48 Danielle Flores (SMC) 7-5, 2-6, 6-3
2. #31 Kyle McPhillips (UCLA) def. #112 Jana McCord (SMC) 2-6, 6-3, 7-6(5)
3. Jamie Pawid (SMC) def. #101 Kaitlin Ray (UCLA) 6-1, 3-6, 6-2
4. Catherine Harrison (UCLA) def. Catherine Leduc (SMC) 5-7, 6-3, 6-3
5. Terri Fleming (UCLA) def. Kareena Manji (SMC) 6-3, 6-3
6. Kristin Wiley (UCLA) def. Emma Critser (SMC) 7-6, 4-6, (9-7)

**#5 Cal 4, #4 UCLA 3****Feb 21, 2015 at Berkeley, CA (Hellman Tennis Complex)****Doubles**

1. #8 Manasse/Starr (CAL) vs. #2 Harrison/McPhillips (UCLA) 7-7, unfinished
2. Robin Anderson/Van Nguyen (UCLA) def. Fabikova/Susanyi (CAL) 8-6
3. Fleming/Wiley (UCLA) def. Lynn Chi/Popovic (CAL) 8-7 (8-6)

**Singles**

1. #1 Maegan Manasse (CAL) def. #9 Chanelle Van Nguyen (UCLA) 3-6, 7-5, 6-1
2. #34 Klara Fabikova (CAL) def. #31 Kyle McPhillips (UCLA) 6-1, 4-6, 6-0
3. Catherine Harrison (UCLA) def. #20 Zsofi Susanyi (CAL) 7-5, 6-3
4. #59 Denise Starr (CAL) def. #101 Kaitlin Ray (UCLA) 6-1, 6-3
5. Karla Popovic (CAL) def. Terri Fleming (UCLA) 6-2, 1-6, 6-3
6. Kristin Wiley (UCLA) def. Cecilia Estlander (CAL) 6-3, 2-6, 6-3

**#11 UCLA 4, #18 Pepperdine 3****Feb 27, 2015 at Malibu, CA (Ralphs-Straus Tennis Center)****Doubles**

1. Guillermo/Runglerdkriangkrai (PEP) vs. #2 Harrison/McPhillips (UCLA) 5-3, unfinished
2. Maddox/Cutura (PEP) def. #28 Anderson/Van Nguyen (UCLA) 6-3
3. Capannolo/Danielle Feneridis (PEP) def. Fleming/Kelly Shaffer (UCLA) 6-3

**Singles**

1. #30 Lorraine Guillermo (PEP) def. #3 Robin Anderson (UCLA) 6-4, 6-3
2. #7 Chanelle Van Nguyen (UCLA) def. Laura Gulbe (PEP) 2-6, 6-1, 6-1
3. #28 Kyle McPhillips (UCLA) def. #96 A.Runglerdkriangkrai (PEP) 6-3, 6-1
4. #72 Catherine Harrison (UCLA) def. Michaela Capannolo (PEP) 6-2, 6-2
5. Christine Maddox (PEP) def. #91 Kaitlin Ray (UCLA) 6-3, 6-4
6. Terri Fleming (UCLA) def. Matea Cutura (PEP) 2-6, 7-5, 7-5

**#12 UCLA 4, #3 USC 1****Mar 4, 2015 at Los Angeles, CA (Los Angeles Tennis Center)****Doubles**

1. #2 Harrison/McPhillips (UCLA) def. #15 Olmos/Scandalis (USC) 8-3
2. #38 Anderson/Van Nguyen (UCLA) def. Zoe Katz/Santamaria (USC) 8-7(2)
3. Smith/Westby (USC) def. Fleming/Kristin Wiley (UCLA) 8-4

**Singles**

1. #3 Robin Anderson (UCLA) def. #17 Giuliana Olmos (USC) 6-4, 6-4
2. #7 Chanelle Van Nguyen (UCLA) def. #36 Zoe Scandalis (USC) 6-2, 3-6, 7-6(4)
3. #46 Sabrina Santamaria (USC) def. #28 Kyle McPhillips (UCLA) 6-2, 6-0
4. #106 Madison Westby (USC) def. #72 Catherine Harrison (UCLA) 1-6, 6-4, 6-1
5. #91 Kaitlin Ray (UCLA) def. #89 Gabby Smith (USC) 7-5, 6-2
6. #94 Meredith Xepoleas (USC) def. Terri Fleming (UCLA) 6-2, 7-6(6)

**#12 UCLA 4, #4 Baylor 3****Mar 7, 2015 at Waco, Texas (Hawkins Indoor Tennis Center)****Doubles**

1. #13 Burgic/Shankle (BU) def. #2 McPhillips/Harrison (UCLA) 6-4
2. James-Baker/Anderson (BU) vs. #38 Anderson/Van Nguyen (UCLA) 5-5, unfinished
3. Generette/Van Zyl (BU) def. Wiley/Terri Fleming (UCLA) 6-0

**Singles**

1. #3 Robin Anderson (UCLA) def. #23 Ema Burgic (BU) 7-6(5), 7-6(6)
2. #37 Blair Shankle (BU) def. #7 Chanelle Van Nguyen (UCLA) 6-4, 6-2
3. #125 Kiah Generette (BU) def. #28 Kyle McPhillips (UCLA) 6-1, 6-3
4. #72 Catherine Harrison (UCLA) def. Kelley Anderson (BU) 6-2, 6-1
5. #91 Kaitlin Ray (UCLA) def. #92 Rachael James-Baker (BU) 6-4, 6-2
6. Kristin Wiley (UCLA) def. Theresa Van Zyl (BU) 7-5, 6-3

**#2 UCLA 7, Washington State 0****Mar 13, 2015 at Pullman, WA (WSU Outdoor Tennis Courts)****Doubles**

1. #3 Kyle McPhillips/Catherine Harrison (UCLA) def. Maria Biryukova/Elizaveta Luzina (WSU) - 8-3
2. #44 Robin Anderson/Chanelle Van Nguyen (UCLA) def. Lize Leen-knecht/Victoria Matejevic (WSU) - 8-3
3. Donika Bashota/Holly Monahan (WSU) vs. Kristin Wiley/Terri Fleming (UCLA) - 4-7 DNF

**Singles**

1. #2 Robin Anderson (UCLA) def. Maria Biryukova (WSU) - 6-1, 6-2
2. #10 Chanelle Van Nguyen (UCLA) def. Elizaveta Luzina (WSU) - 6-1, 6-4
3. #79 Catherine Harrison (UCLA) def. Lize Leen-knecht (WSU) - 6-1, 6-2
4. #89 Kaitlin Ray (UCLA) def. Donika Bashota (WSU) - 6-1, 6-3
5. Kristin Wiley (UCLA) def. Victoria Matejevic (WSU) - 6-3, 6-1
6. Terri Fleming (UCLA) def. Nastia Vasyukhina (WSU) - 6-1, 6-1

**#3 Cal 4, #5 UCLA 3****Mar 20, 2015 at Los Angeles, CA (Los Angeles Tennis Center)****Doubles**

1. #5 Manasse/Starr (CAL) def. #3 Harrison/McPhillips (UCLA) 8-4
2. Anderson/Jennifer Brady (UCLA) def. #11 Fabikova/Susanyi (CAL) 8-6
3. Lynn Chi/Popovic (CAL) def. Van Nguyen/Wiley (UCLA) 8-4

**Singles**

1. #2 Robin Anderson (UCLA) def. #4 Maegan Manasse (CAL) 2-6, 6-3, 6-4
2. #27 Klara Fabikova (CAL) def. #10 Chanelle Van Nguyen (UCLA) 7-5, 7-6(11)
3. #81 Denise Starr (CAL) def. #35 Kyle McPhillips (UCLA) 6-3, 6-2
4. #79 Catherine Harrison (UCLA) def. #29 Zsofi Susanyi (CAL) 6-2, 6-7(4), 7-6(6)
5. #60 Karla Popovic (CAL) def. #98 Kaitlin Ray (UCLA) 6-2, 6-3
6. Kristin Wiley (UCLA) def. Cecilia Estlander (CAL) 6-1, 6-3

**#5 UCLA 5, #10 Stanford 2****March 21, 2015 at Los Angeles, CA (Los Angeles Tennis Center)****Doubles**

1. #2 Davidson/Zhao (STAN) def. #3 Harrison/McPhillips (UCLA) 8-3
2. Anderson/Jennifer Brady (UCLA) def. #13 Doyle/Tsay (STAN) 8-0
3. Van Nguyen/Wiley (UCLA) def. Hardebeck/Kostas (STAN) 8-3

**Singles**

1. #2 Robin Anderson (UCLA) def. #3 Carol Zhao (STAN) 6-3, 6-2
2. #17 Taylor Davidson (STAN) def. #10 Chanelle Van Nguyen (UCLA) 6-1, 6-4
3. #35 Kyle McPhillips (UCLA) def. #28 Caroline Doyle (STAN) 6-2, 6-4
4. #79 Catherine Harrison (UCLA) def. #110 Krista Hardebeck (STAN) 6-0, 6-3
5. #69 Ellen Tsay (STAN) def. #98 Kaitlin Ray (UCLA) 6-2, 6-3
6. Kristin Wiley (UCLA) def. Lindsey Kostas (STAN) 6-2, 6-1



## 2015 Match-By-Match Results

### #4 UCLA 6, #44 Washington 1

Mar 27, 2015 at Seattle, WA (Bill Quillian Tennis Stadium)

#### Doubles

- #23 Anderson/Brady (UCLA) def. Kobayashi/Shimizu (WASH) 8-3
- #1 Harrison/McPhillips (UCLA) def. Lukac/Ysidora (WASH) 8-6
- Van Nguyen/Wiley (UCLA) def. Bott/Gregoire (WASH) 8-3

#### Singles

- #1 Robin Anderson (UCLA) def. Grace Ysidora (WASH) 6-2, 6-1
- #46 Jennifer Brady (UCLA) def. Miki Kobayashi (WASH) 6-3, 6-2
- #13 Channele Van Nguyen (UCLA) def. Julija Lukac (WASH) 7-5, 6-1
- #53 Catherine Harrison (UCLA) def. Riko Shimizu (WASH) 6-1, 6-1
- Capucine Gregoire (WASH) def. Kristin Wiley (UCLA) 6-1, 6-4
- Terri Fleming (UCLA) def. Sophia Bott (WASH) 7-6, 6-0

### #4 UCLA 5, #56 Oregon 2

Mar 28, 2015 at Eugene, OR (Student Tennis Center)

#### Doubles

- #23 Anderson/Brady (UCLA) def. Rose/Tobita (ORE) 8-4
- Kluiving/Long (ORE) def. #1 Harrison/Kyle McPhillips (UCLA) 8-5
- Van Nguyen/Wiley (UCLA) def. Åkesson/Sofia Hager (ORE) 8-2

#### Singles

- #1 Robin Anderson (UCLA) def. Nia Rose (ORE) 6-1, 6-1
- Alyssa Tobita (ORE) def. #46 Jennifer Brady (UCLA) 6-2, 3-2, retired
- Nicole Long (ORE) def. #13 Channele Van Nguyen (UCLA) 7-5, 6-1
- #53 Catherine Harrison (UCLA) def. Marlou Kluiving (ORE) 6-2, 7-6(12)
- Kristin Wiley (UCLA) def. Lina Åkesson (ORE) 4-6, 6-3, (13-11)
- Terri Fleming (UCLA) def. Paloma Gomez (ORE) 6-1, 6-0

### #4 UCLA 4, #23 ASU 3

Apr 03, 2015 at Tempe, AZ (Whiteman Tennis Center)

#### Doubles

- #23 Anderson/Brady (UCLA) def. #36 Krawczyk/Vlad (ASU) 8-2
- #1 Harrison/McPhillips (UCLA) def. #77 Jump/Smith (ASU) 8-7(4)
- Alexandra Osborne/Panoho (ASU) def. Van Nguyen/Wiley (UCLA) 8-4

#### Singles

- #45 Desirae Krawczyk (ASU) def. #1 Robin Anderson (UCLA) 6-4, 3-6, 6-2
- #46 Jennifer Brady (UCLA) def. Stephanie Vlad (ASU) 6-4, 6-2
- #13 Channele Van Nguyen (UCLA) def. Cassidy Jump (ASU) 4-6, 6-2, 6-0
- Joanna Smith (ASU) def. #29 Kyle McPhillips (UCLA) 1-6, 6-4, 7-6(8)
- #53 Catherine Harrison (UCLA) def. Gussie O'Sullivan (ASU) 6-0, 6-1
- Ebony Panoho (ASU) def. Kristin Wiley (UCLA) 4-6, 6-3, 6-0

### #4 UCLA 7, #41 Arizona 0

Apr 04, 2015 at Tucson, AZ (LaNelle Robson Tennis Center)

#### Doubles

- Preston/Austin (ARIZ) def. #23 Brady/Anderson (UCLA) 8-5
- #1 McPhillips/Harrison (UCLA) def. Marker/Hendrikx (ARIZ) 8-3
- Wiley/Van Nguyen (UCLA) def. Oldham/Chnypyha (ARIZ) 8-3

#### Singles

- #1 Robin Anderson (UCLA) def. #80 Lauren Marker (ARIZ) 6-3, 6-2
- #46 Jennifer Brady (UCLA) def. #114 Briar Preston (ARIZ) 6-3, 6-2
- #13 Channele Van Nguyen (UCLA) def. Laura Oldham (ARIZ) 6-1, 6-1
- #29 Kyle McPhillips (UCLA) def. Devin Chnypyha (ARIZ) 6-1, 4-6, (10-4)
- #53 Catherine Harrison (UCLA) def. Shayne Austin (ARIZ) 6-0, 6-0
- Kristin Wiley (UCLA) def. Inge Hendrikx (ARIZ) 6-3, 6-2

### #4 UCLA 7, #65 Colorado 0

Apr 10, 2015 at Los Angeles, CA (Los Angeles Tennis Center)

#### Doubles

- #19 Anderson/Brady (UCLA) def. Bokhua/Steur (CU) 8-1
- #4 Harrison/Kyle McPhillips (UCLA) def. Aiello/Tiefel (CU) 8-1
- Channele Van Nguyen/Wiley (UCLA) def. Ormeno Ruiz/Wojcik (CU) 8-3

#### Singles

- #1 Robin Anderson (UCLA) def. Tina Bokhua (CU) 6-0, 6-1
- #50 Jennifer Brady (UCLA) def. Juliette Steur (CU) 6-0, 6-0
- #63 Catherine Harrison (UCLA) def. Nuria Ormeno Ruiz (CU) 6-0, 6-1
- #95 Kaitlin Ray (UCLA) def. Alex Aiello (CU) 6-1, 6-4
- Kristin Wiley (UCLA) def. Kyra Wojcik (CU) 6-2, 6-3
- Terri Fleming (UCLA) def. Ashley Tiefel (CU) 6-1, 6-0

### #4 UCLA 7, #59 Utah 0

Apr 11, 2015 at Los Angeles, CA (Los Angeles Tennis Center)

#### Doubles

- #19 Anderson/Brady (UCLA) def. #46 Bekerova/Pletcher (UTAH) 8-5
- #4 Harrison/Kyle McPhillips (UCLA) vs. Cheng/Richter (UTAH) 7-4, unfinished
- Channele Van Nguyen/Wiley (UCLA) def. Elena Najera-Salas/Da Rosa (UTAH) 8-2

#### Singles

- #1 Robin Anderson (UCLA) def. #57 Tereza Bekerova (UTAH) 6-4, 6-1
- #50 Jennifer Brady (UCLA) def. Sarah Richter (UTAH) 6-2, 6-3
- #63 Catherine Harrison (UCLA) def. Jena Cheng (UTAH) 6-2, 6-2
- #95 Kaitlin Ray (UCLA) def. Margo Pletcher (UTAH) 6-2, 6-2
- Kristin Wiley (UCLA) def. Luisa Da Rosa (UTAH) 6-0, 6-2
- Terri Fleming (UCLA) def. Alexia Petrovic (UTAH) 6-2, 6-2

### #2 USC 4, #5 UCLA 3

Apr 16, 2015 at Los Angeles, CA (Marks Tennis Stadium)

#### Doubles

- #15 Anderson/Brady (UCLA) def. #23 Zoe Katz/Santamaria (USC) 8-3
- #217 Olmos/Scandalis (USC) vs. #3 Harrison/McPhillips (UCLA) 6-5, unfinished
- Van Nguyen/Kristin Wiley (UCLA) def. Smith/Westby (USC) 8-4

#### Singles

- #1 Robin Anderson (UCLA) def. #19 Sabrina Santamaria (USC) 3-6, 6-0, 7-5
- #13 Giuliana Olmos (USC) def. #49 Jennifer Brady (UCLA) 2-6, 7-5, 6-2
- #61 Zoe Scandalis (USC) def. #17 Channele Van Nguyen (UCLA) 6-2, 7-6(5)
- #78 Madison Westby (USC) def. #28 Kyle McPhillips (UCLA) 5-7, 7-6(5), 6-4
- #64 Catherine Harrison (UCLA) def. #75 Gabby Smith (USC) 6-4, 1-6, 6-2
- #79 Meredith Xepoleas (USC) def. #91 Kaitlin Ray (UCLA) 4-6, 7-5, 6-4

### #6 UCLA 4, Idaho 0

May 9, 2015 at Los Angeles, CA (Los Angeles Tennis Center)

#### Doubles

- #9 Anderson/Brady (UCLA) def. Bykova/Marx (IDAHO) 8-2
- Fleming/Harrison (UCLA) def. Barcenilla/Vickers (IDAHO) 8-1
- Van Nguyen/Wiley (UCLA) vs. Badillos/Bermudez (IDAHO) 7-2, unfinished

#### Singles

- #1 Robin Anderson (UCLA) def. Galina Bykova (IDAHO) 6-1, 6-2
- #21 Channele Van Nguyen (UCLA) vs. Emmie Marx (IDAHO) 6-0, 3-0, unfinished
- #47 Jennifer Brady (UCLA) vs. Sophie Vickers (IDAHO) 6-1, 5-2, unfinished
- #33 Catherine Harrison (UCLA) def. Rita Bermudez (IDAHO) 6-0, 6-0
- Terri Fleming (UCLA) def. Belen Barcenilla (IDAHO) 6-1, 6-0
- #109 Kaitlin Ray (UCLA) vs. Lucia Badillos (IDAHO) 6-2, 5-2, unfinished

### #6 UCLA 4, #26 Northwestern 0

May 10, 2015 at Los Angeles, CA (Los Angeles Tennis Center)

#### Doubles

- #9 Anderson/Brady (UCLA) def. #48 Barnett/Larner (NU) 8-1
- #3 Harrison/McPhillips (UCLA) def. Doshi/Rischbieth (NU) 8-4
- Chatt/Sze Leung (NU) def. Van Nguyen/Kristin Wiley (UCLA) 8-1

#### Singles

- #1 Robin Anderson (UCLA) def. Alicia Barnett (NU) 6-1, 6-2
- #21 Channele Van Nguyen (UCLA) def. Erin Larner (NU) 6-3, 6-3
- #47 Jennifer Brady (UCLA) vs. Lok Sze Leung (NU) 6-0, 4-4, unfinished
- #33 Catherine Harrison (UCLA) def. Alex Chatt (NU) 6-1, 6-1
- #35 Kyle McPhillips (UCLA) vs. Rheeya Doshi (NU) 6-4, 2-1, unfinished
- #109 Kaitlin Ray (UCLA) vs. Brooke Rischbieth (NU) 4-6, 2-3, unfinished

### #7 UCLA 4, #10 Texas A&M 1

May 15, 2015 at Waco, TX (Hurd Tennis Complex)

#### Doubles

- #13 Paalma/Pierson (TAMU) def. #9 Anderson/Brady (UCLA) 8-5
- #3 Harrison/McPhillips (UCLA) def. #39 Deheza/Stefania Hristov (TAMU) 8-3
- Bhosale/Gavrilovska (TAMU) def. Van Nguyen/Terri Fleming (UCLA) 8-6

#### Singles

- #1 Robin Anderson (UCLA) def. #26 Rachel Pierson (TAMU) 4-6, 6-1, 6-1
- #21 Channele Van Nguyen (UCLA) def. #54 Saska Gavrilovska (TAMU) 6-3, 6-2
- #47 Jennifer Brady (UCLA) def. #66 Rutuja Bhosale (TAMU) 6-3, 6-2
- #43 Catherine Harrison (UCLA) def. Ines Deheza (TAMU) 6-1, 7-5
- #35 Kyle McPhillips (UCLA) vs. Eva Paalma (TAMU) 2-6, 4-2, unfinished
- #109 Kaitlin Ray (UCLA) vs. Anna Mamalat (TAMU) 6-7 (4-7), unfinished

### #6 UCLA 4, #2 North Carolina 1

May 17, 2015 at Waco, TX (Hurd Tennis Complex)

#### Doubles

- #9 Anderson/Brady (UCLA) def. #35 Carter/Kay (UNC) 8-5
- #3 Harrison/McPhillips (UCLA) def. Dai/Loeb (UNC) 8-4
- Price/Vialle (UNC) def. Terri Fleming/Van Nguyen (UCLA) 8-0

#### Singles

- #1 Robin Anderson (UCLA) def. #7 Jamie Loeb (UNC) 6-3, 7-6(1)
- #21 Channele Van Nguyen (UCLA) def. #16 Haley Carter (UNC) 6-0, 6-2
- #47 Jennifer Brady (UCLA) def. #20 Caroline Price (UNC) 6-4, 6-1
- #102 Whitney Kay (UNC) def. #33 Catherine Harrison (UCLA) 6-3, 6-4
- Kate Vialle (UNC) vs. #35 Kyle McPhillips (UCLA) 6-4, 3-6, 1-3, unfinished
- Ashley Dai (UNC) vs. #109 Kaitlin Ray (UCLA) 2-6, 6-1, 2-2, unfinished

### #6 UCLA 4, #7 Georgia 1

May 18, 2015 at Waco, TX (Hurd Tennis Complex)

#### Doubles

- #11 Herring/Perez (UGA) def. #9 Anderson/Brady (UCLA) 8-7(1)
- #43 Garcia/Shaffer (UGA) vs. #3 Harrison/McPhillips (UCLA) 7-6, unfinished
- #85 Brinson/King (UGA) def. Van Nguyen/Kristin Wiley (UCLA) 8-2

#### Singles

- #5 Lauren Herring (UGA) vs. #1 Robin Anderson (UCLA) 6-3, 3-6, unfinished
- #21 Channele Van Nguyen (UCLA) def. #63 Ellen Perez (UGA) 6-3, 6-3
- #47 Jennifer Brady (UCLA) def. #94 Silvia Garcia (UGA) 6-3, 6-0
- #33 Catherine Harrison (UCLA) def. #59 Kennedy Shaffer (UGA) 6-1, 6-3
- #88 Hannah King (UGA) vs. #35 Kyle McPhillips (UCLA) 6-3, 4-6, 1-0, unfinished
- #109 Kaitlin Ray (UCLA) def. #104 Caroline Brinson (UGA) 7-6(3), 6-2

### #4 Vanderbilt 4, #6 UCLA 2

May 18, 2015 at Waco, TX (Hurd Tennis Complex)

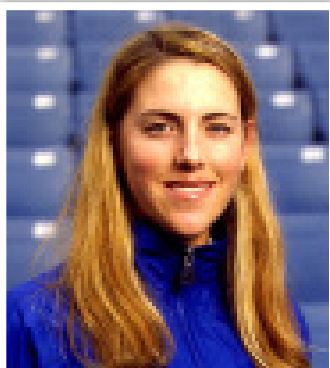
#### Doubles

- #20 Campbell/Colton (VANDY) def. #9 Anderson/Brady (UCLA) 8-3
- #3 Harrison/McPhillips (UCLA) def. #18 Antal/Sharma (VANDY) 8-5
- Altick/Casares (VANDY) def. Maia Magill/Van Nguyen (UCLA) 8-5

#### Singles

- #1 Robin Anderson (UCLA) def. #8 Sydney Campbell (VANDY) 6-4, 6-1
- #42 Astra Sharma (VANDY) def. #21 Channele Van Nguyen (UCLA) 3-6, 6-2, 6-4
- #47 Jennifer Brady (UCLA) def. #96 Frances Altick (VANDY) 6-4, 7-6(5)
- #61 Courtney Colton (VANDY) def. #33 Catherine Harrison (UCLA) 7-6(5), 6-4
- #120 Marie Casares (VANDY) vs. #35 Kyle McPhillips (UCLA) 6-3, 6-7(4), 3-3, unfinished
- Ashleigh Antal (VANDY) def. #109 Kaitlin Ray (UCLA) 6-1, 7-6(5)

## All-Time Letter Winners



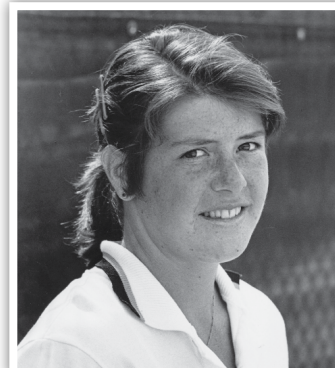
Amanda Basica



Cammie Foley



Kati Kocsis



Kathy O'Brien

### ► A

Jessica Algazi..... 1984-85  
Annemarie Amaral ..... 1987  
Robin Anderson.....2012-15  
Jody Anglin.....1996-97

### ► B

Jenny Baker .....1992-93  
Penny Barg.....1983  
Colinne Bartel.....1986-88  
Amanda Basica .....1998-00  
Becky Bell .....1978-80  
Daniela Bercek.....2004-05  
Rene Blount.....1978  
Jennifer Brady.....2014-15  
Megan Bradley .....2002  
Andrea Bruno .....1981-82

### ► C

Cindy Campbell .....1980-82  
Jackie Carleton .....2003-04  
Debbie Ceccato .....1987  
Mamie Ceniza.....1989-92  
Dominique Cetale.....2014  
Jane Chi .....1993-95  
Stephanie Chi.....1995-96  
Meredith Chiles .....1993  
Allyson Cooper.....1985-88  
Annica Cooper.....1997-00

### ► D

Karen Dewis .....1981-84  
Jordan Dockendorf.....2009  
Courtney Dolehide .....2011-14  
Jennifer Donahue.....1998-00  
Jill Doty.....1987  
Kirsten Dreyer.....1988-91  
Becky Duesler.....2007-08  
Jeanne Duvall.....1978

### ► E

Jessica Emmons.....1988-90  
Ferial Essegir.....2003-04

### ► F

Lauren Fisher .....2001-04  
Holly Fleming.....2012-13  
Terri Fleming.....2015  
Cammie Foley.....1990-93  
Brandi Freudenberg.....1996-99  
Mariko Fritz-Krockow.....2001-02  
Jennifer Fuchs .....1986-87

### ► G

Kerry Gallant.....1995-96  
Barbara Gerken.....1983  
Dana Gilbert .....1978-79  
Chelsea Godbey .....2001  
Lara Goldt.....1989  
Laura Gordon.....2003-06  
Lucy Gordon.....1979-80  
Shannon Gordon .....1978-79  
Alyson Gray .....1996-98  
Shana Gray .....1996-98  
Sarah Gregg.....2002-05

### ► H

Michelle Hain.....1987  
Catherine Harrison.....2013-15  
Catherine Hawley .....2000-02  
Ann Henricksson .....1979  
Noelle Hickey.....2010-11  
Jenny Hilt .....1991-94  
Stephanie Hoffpaur.....2010  
Kristy Howard .....1994  
Karin Huebner .....1980-83  
Patricia Hy.....1984-86

### ► J

Jill Jablonow.....1980-82  
Michelle Jannone .....1994-95  
Stacey Jellen.....1994  
Ashley Joelson .....2006-09  
Maya Johansson.....2009-11  
Kate Jolson .....2003-04  
McCall Jones .....2011-12  
Shilpa Joshi.....2003-04

### ► K

Kathrin Keil.....1981-82  
Dylan Kirsch .....2013  
Kati Kocsis.....1997-98  
Andrea Kriva .....1983

### ► L

Debbie LaFranchi .....1989-91  
Maria LaFranchi .....1985-88  
Lynn Lewis .....1982-85  
Megan Lester.....2011-13  
Andrea Lieberman.....1989  
Tracy Lin.....2005-08  
Anna-Viktoria Lind .....2006-09  
Anya Loncaric .....2003-05  
Heather Ludloff .....1982-83  
Elizabeth Lumpkin.....2005-08

### ► M

Maia Magill .....2015  
Anne Mall .....1992  
Helena Manset.....1980-83  
Petya Marinova.....1999-02  
Alysia May .....1989  
Iwalani McCalla .....1989-92  
Alex McGoodwin .....2004-08  
Kyle McPhillips .....2013-15  
Anicia Mendez .....1993-96  
Allegra Milholland .....1990-91  
Elizabeth Minter .....1984  
Pamela Montez .....2010-13  
Skylar Morton.....2012-13  
Jennifer Moyers .....1987

### ► N

Beth Nicholson .....1989

### ► O

Kathy O'Brien.....1979-82  
Kathy O'Daly .....1995-97  
Catherine O'Meara.....1986-89  
Wendy Ouwendijk.....1987-88

### ► P

Nina Pantic .....2009-11  
Keri Phebus .....1993-96  
Kimberly Po .....1990-91  
Cristina Popescu .....1998-01  
Sara Poppelbaum.....1982

### ► R

Becky Rajfer.....1998  
Amber Ray .....2004-07  
Kaitlin Ray.....2012-15  
Andrea Remyne .....2008-11  
Brittany Rosen .....2008-09  
LeeAnn Rostovsky .....1992-93  
Katia Roubanova.....1997-99  
Kelly Rudolph.....1995-98

### ► S

Stella Sampras.....1988-91  
Elizabeth Schmidt .....1997-00  
Yasmin Schnack .....2007-10  
Carling Seguso .....2009-12  
Kelly Shaffer .....2014-15  
Kathy Snelson .....1978  
Shelly Solomon.....1981-82  
Diana Spadea.....1994-95  
Abigail Spears.....2000  
Liz Stadler.....1980-81  
Susie Starrett .....1994-95  
Michelle Stiefel.....2000-01

### ► T

Robin Tenny .....1978  
Jane Thomas .....1984-87  
Morgan Thomas .....2011-14  
Helen Tu.....1991-93

### ► U

Joni Urban.....1985-88

### ► V

Chanelle Van Nguyen.....2012-15

### ► W

Angela Walker.....1980  
Sara Walker .....2000-03  
Karina Walters .....1985  
Stephanie Wetmore .....2007-09  
Susi Wild .....2003  
Kristin Wiley.....2015  
Jannell Wilkins.....1987

### ► Y

Nina Yaftali .....2003-04  
Sarah Yang.....2007-08  
Paige Yaroshuk.....1992-96

### ► Z

Riza Zalameda.....2005-08  
Zana Zlebnik.....2000-01



### ► All-Americans

Robin Anderson ... 2012-13-14-15  
 Amanda Basica ..... 1999  
 Becky Bell ..... 1979  
 Daniela Bercek ..... 2004-05  
 Rene Blount ..... 1978  
 Jennifer Brady ..... 2014-15  
 Megan Bradley ..... 2002  
 Jackie Carleton ..... 2003-04  
 Mamie Ceniza ..... 1989-90-91-92  
 Stephanie Chi ..... 1995  
 Jane Chi ..... 1994-95  
 Annica Cooper ..... 1997-98-99  
 Courtney Dolehide ..... 2012  
 Jeanne Duvall ..... 1978  
 Jessica Emmons ..... 1988-89  
 Lauren Fisher ..... 2001-02  
 Cammie Foley ..... 1993  
 Jennifer Fuchs ..... 1986-87  
 Barbara Gerken ..... 1983  
 Dana Gilbert ..... 1978-79  
 Laura Gordon ..... 2006  
 Shannon Gordon ..... 1978-79  
 Catherine Harrison ..... 2014-15  
 Ann Hendricksson ..... 1979-81  
 Noelle Hickey ..... 2010  
 Patricia Hy ..... 1984  
 Kathrin Keil ..... 1981-82  
 Kati Kocsis ..... 1997  
 Andrea Kriva ..... 1983  
 Lynn Lewis ..... 1982-84-85

Tracy Lin ..... 2007-08  
 Heather Ludloff ..... 1982-83  
 Helena Manset ..... 1982-83  
 Elizabeth Minter ..... 1984  
 Petya Marinova ..... 2001-02  
 Alysia May ..... 1989  
 Iwalani McCalla ..... 1991-92  
 Kyle McPhillips ..... 2013-14-15  
 Pamela Montez ..... 2012  
 Skylar Morton ..... 2012-13  
 Kathy O'Brien ..... 1979-80-81-82  
 Keri Phebus ..... 1993-94-95-96  
 Kimberly Po ..... 1991  
 Andrea Remyne ..... 2009-10  
 Katia Roubanova ..... 1997  
 Stella Sampras ..... 1988-89-90-91  
 Elizabeth Schmidt ..... 1997  
 Yasmin Schnack ..... 2007-09-10  
 Paula Smith ..... 1976-77  
 Shelly Solomon ..... 1981-82  
 Diana Spadea ..... 1994  
 Susie Starrett ..... 1994-95  
 Cindy Thomas ..... 1976  
 Jane Thomas ..... 1985-86-87  
 Joni Urban ..... 1985-87-88  
 Chanelle Van Nguyen ..... 2014-15  
 Sara Walker ..... 2000-01-02-03  
 Paige Yaroshuk ..... 1996  
 Riza Zalameda ..... 2005-06-07-08



Heather Ludloff (left) and Lynn Lewis won the 1982 NCAA Doubles Championship.



Susie Starrett



Jane Thomas

### ► Award Winners

#### ITA National Player of the Year

Year ..... Name  
 1995 ..... Keri Phebus

#### ITA National Rookie of the Year

Year ..... Name  
 2002 ..... Megan Bradley  
 2012 ..... Robin Anderson

#### ITA Rookie of the Year (Southwest Region)

Year ..... Name  
 2001 ..... Lauren Fisher  
 2003 ..... Jackie Carleton  
 2012 ..... Robin Anderson  
 2013 ..... Kyle McPhillips  
 2014 ..... Jennifer Brady

#### ITA National Coach of the Year

Year ..... Name  
 2012 ..... Stella Sampras Webster

#### ITA Coach of the Year (Southwest Region)

Year ..... Name  
 1988 ..... Bill Zaima  
 1989 ..... Bill Zaima  
 1990 ..... Bill Zaima  
 1995 ..... Bill Zaima  
 1996 ..... Bill Zaima

2000 ..... Stella Sampras  
 2012 ..... Stella Sampras Webster

#### ITA/Cissie Leary Sportsmanship Award

Year ..... Name  
 2006 ..... Laura Gordon

#### ITA/Cissie Leary Sportsmanship Award (Southwest Region)

Year ..... Name  
 2002 ..... Sara Walker  
 2006 ..... Laura Gordon  
 2007 ..... Elizabeth Lumpkin

#### ITA/Arthur Ashe Leadership Award (Southwest Region)

Year ..... Name  
 2008 ..... Elizabeth Lumpkin

#### ITA National Intercollegiate Indoors Champions

Year ..... Name  
 1995 ..... Jane Chi (S)  
 1995 .. Keri Phebus/Susie Starrett (D)

#### USTA/ITA National Indoors Sportsmanship Award

Year ..... Name  
 2003 ..... Sara Walker

#### ITA National Assistant Coach of the Year

Year ..... Name  
 2000 ..... Rance Brown  
 2010 ..... Rance Brown  
 2012 ..... Rance Brown

#### ITA Assistant Coach of the Year (Southwest Region)

Year ..... Name  
 1999 ..... Rance Brown  
 2000 ..... Rance Brown  
 2007 ..... Rance Brown  
 2010 ..... Rance Brown  
 2012 ..... Rance Brown

#### ITA Senior Player of the Year

Year ..... Name  
 1996 ..... Keri Phebus  
 2008 ..... Riza Zalameda  
 2015 ..... Robin Anderson

#### ITA Senior Player of the Year (Southwest Region)

Year ..... Name  
 1996 ..... Keri Phebus  
 2008 ..... Riza Zalameda  
 2010 ..... Yasmin Schnack

#### ITA Player to Watch

Year ..... Name  
 1993 ..... Keri Phebus  
 2000 ..... Sara Walker

#### UCLA Female Athlete of the Year

Year ..... Name  
 1995 ..... Keri Phebus

#### Honda Award Winners

Year ..... Name  
 1978 ..... Jeanne Duvall  
 1995 ..... Keri Phebus  
 2014 ..... Robin Anderson  
 2015 ..... Robin Anderson

#### UCLA Athletics Hall of Fame

Year ..... Name  
 2007 ..... Keri Phebus

**Note:** ITA awards are national honors unless otherwise indicated



The 2014 Bruins took home the program's third national championship by defeating UNC, 4-3 in the NCAA final in Athens, Ga.

### All-Pac-12

Year	Name
1987	Jane Thomas
1988	Allyson Cooper
1989	Jessica Emmons
1990	Jessica Emmons
1991	Kimberly Po
1992	Mamie Ceniza
1993	Keri Phebus
1994	Jane Chi
	Keri Phebus
1995	Jane Chi, 1st
	Keri Phebus, 1st
1996	Keri Phebus, 1st
	Paige Yaroshuk, 1st
	Stephanie Chi, 2nd
1997	Kati Kocsis, 1st
	Elizabeth Schmidt, 2nd
1998	Annica Cooper, 1st
	Cristina Popescu, 2nd
1999	Annica Cooper, 1st
	Amanda Basica, HM
	Cristina Popescu, HM
2000	Sara Walker, 1st
	Annica Cooper, 2nd
	Abigail Spears, HM
2001	Sara Walker, 1st
2002	Sara Walker, 1st
	Megan Bradley, 1st
2003	Sara Walker, 2nd
	Jackie Carleton, 2nd
2004	Daniela Bercek, 2nd
	Jackie Carleton, 2nd
2005	Daniela Bercek, 1st
	Riza Zalameda, 2nd
2006	Laura Gordon, 1st
	Riza Zalameda, 2nd
	Tracy Lin, HM
2007	Riza Zalameda, 1st
	Tracy Lin, 2nd
	Yasmin Schnack, 2nd
2008	Riza Zalameda, 1st
	Tracy Lin, 2nd
	Andrea Remyne, HM
2009	Yasmin Schnack, 1st
	Andrea Remyne, 2nd
2010	Yasmin Schnack, 1st
	Andrea Remyne, 2nd
	Noelle Hickey, HM
2011	Noelle Hickey, HM
	Andrea Remyne, HM
2012	Robin Anderson, 1st

2013	Robin Anderson, 1st
	Kyle McPhillips, 2nd
2014	Robin Anderson, 1st
	Jennifer Brady, 1st
	Chanelle Van Nguyen, 2nd
	Kyle McPhillips, HM
2015	Robin Anderson, 1st
	Catherine Harrison, 2nd
	Chanelle Van Nguyen, 2nd
	Jennifer Brady, HM
	Kyle McPhillips, HM

### Pac-12 Singles Champions

Year	Name
1987	Jane Thomas
1995	Keri Phebus
1998	Annica Cooper
2000	Sara Walker
2008	Riza Zalameda
2010	Yasmin Schnack
2013	Kyle McPhillips
2014	Jennifer Brady
2015	Catherine Harrison

### Pac-12 Doubles Champions

Year	Name
1989	Mamie Ceniza / Stella Sampras
1991	Kimberly Po / Stella Sampras
1996	Keri Phebus / Paige Yaroshuk
2001	Mariko Fritz-Krockow/Sara Walker
2007	Yasmin Schnack/Riza Zalameda
2010	Andrea Remyne/Yasmin Schnack

### Pac-12 Invitational Singles Champions

Year	Name
2006	Ashley Joelson
2008	Alex McGoodwin
2009	Carling Seguso
2010	Nina Pantic

### Pac-12 Invitational Doubles Champions

Year	Name
2009	Maya Johansson/Anna-Viktoria Lind
2010	Stephanie Hoffpauir/Carling Seguso

### Pac-12 All-Academic

Year	Name
1991	Kirsten Dreyer, 1st
	Kimberly Po, 2nd
1998	Annica Cooper, 1st
1999	Amanda Basica, 1st
	Annica Cooper, 1st
	Cristina Popescu, HM
	Katia Roubanova, HM
	Elizabeth Schmidt, HM
2000	Amanda Basica, 1st
	Annica Cooper, 1st
	Elizabeth Schmidt, 2nd
2002	Lauren Fisher, 2nd
	Catherine Hawley, HM
2004	Lauren Fisher, 1st
	Jackie Carleton, HM
2005	Alex McGoodwin, 1st
	Daniela Bercek, 2nd
	Laura Gordon, HM
	Sarah Gregg, HM
2006	Alex McGoodwin, 1st
	Tracy Lin, 2nd
	Elizabeth Lumpkin, 2nd
	Riza Zalameda, 2nd
	Laura Gordon, HM
2007	Tracy Lin, 1st
	Elizabeth Lumpkin, 1st
	Alex McGoodwin, 1st
	Riza Zalameda, 2nd
	Anna-Viktoria Lind, HM
2008	Tracy Lin, 1st
	Elizabeth Lumpkin, 1st
	Alex McGoodwin, 1st
	Riza Zalameda, 2nd
2009	Andrea Remyne, 2nd
	Ashley Joelson, HM
2010	Andrea Remyne, 1st
	Nina Pantic, HM
2011	Andrea Remyne, 1st
	Maya Johansson, HM
2012	Courtney Dolehide, HM
2013	Kaitlin Ray, 1st
	Courtney Dolehide, HM
2014	Kaitlin Ray, 1st
	Kyle McPhillips, HM
	Courtney Dolehide, HM
2015	Kaitlin Ray, 1st
	Robin Anderson, HM
	Catherine Harrison, HM
	Kyle McPhillips, HM

### Pac-12 Player of the Year

Year	Name
1995	Keri Phebus
1998	Annica Cooper
2008	Riza Zalameda
2010	Yasmin Schnack
2014	Robin Anderson
2015	Robin Anderson

### Pac-12 Doubles Team of the Year

Year	Name
2005	Daniela Bercek/Riza Zalameda
2008	Tracy Lin/Riza Zalameda
2010	Andrea Remyne/Yasmin Schnack
2014	Robin Anderson/Jennifer Brady

### Pac-12 Coach of the Year

Year	Name
1988	Bill Zaima
1991	Bill Zaima
2008	Stella Sampras Webster

### Pac-12 Freshman of the Year

Year	Name
2000	Sara Walker
2002	Megan Bradley
2004	Daniela Bercek
2012	Robin Anderson
2013	Kyle McPhillips
2014	Jennifer Brady

### Pac-12 Scholar-Athlete of the Year

Year	Name
2008	Riza Zalameda
2015	Kaitlin Ray

### Pac-12 Team Champions

Year	Coach
2008	Stella Sampras Webster

Note: Honors are Pac-10 through 2011. The Pac-12 was established in 2012.





UCLA captured the program's first NCAA title in Tulsa, Okla. in 2008 (def. Cal, 4-0)



UCLA defeated North Carolina, 4-3 in the 2014 NCAA Final in Athens, Ga.

### ► National Championships (3)

Year	Place (Organization)	Year	Place (Organization)
1976	4th (AIAW)	1998	T-9th (NCAA)
1977	9th (AIAW)	1999	T-17th (NCAA)
1978	3rd (AIAW)	2000	T-5th (NCAA)
1979	4th (AIAW)	2001	T-9th (NCAA)
1980	6th (AIAW)	2002	T-5th (NCAA)
<b>1981</b>	<b>1st (AIAW)</b>	2003	T-5th (NCAA)
1982	2nd (NCAA)	2004	2nd (NCAA)
1983	3rd (NCAA)	2005	T-9th (NCAA)
1984	5th (NCAA)	2006	T-9th (NCAA)
1985	9th (NCAA)	2007	2nd (NCAA)
1986	9th (NCAA)	<b>2008</b>	<b>1st (NCAA)</b>
1987	5th (NCAA)	2009	T-9th (NCAA)
1988	3rd (NCAA)	2010	T-9th (NCAA)
1989	2nd (NCAA)	2011	T-3rd (NCAA)
1990	3rd (NCAA)	2012	2nd (NCAA)
1991	2nd (NCAA)	2013	T-3rd (NCAA)
1992	T-5th (NCAA)	<b>2014</b>	<b>1st (NCAA)</b>
1993	T-9th (NCAA)	2015	2nd (NCAA)
1994	T-9th (NCAA)		
1995	T-5th (NCAA)		
Year	Place (Organization)		
1996	T-3rd (NCAA)		
1997	T-5th (NCAA)		

### ► NCAA Singles Champions (1)

Year	Result
1995	Keri Phebus def. Kelly Pace (Texas), 6-2, 6-3

### ► NCAA Doubles Champions (6)

Year	Result
1982	Heather Ludloff/Lynn Lewis def. Kathy O'Brien/Helena Manset (UCLA), 6-4, 4-6, 7-6
1988	Stella Sampras/Allyson Cooper def. Ronnie Reis/Jami Yonekura (Miami), 4-6, 6-2, 6-4
1992	Mamie Ceniza/Iwalani McCalla def. Susan Gilchrist/Vickie Paynter (Texas), 6-4, 6-4
1995	Keri Phebus/Susie Starrett def. Cristina Moros/Kelly Pace (Texas), 6-3, 6-3
2004	Daniela Bercek/Lauren Fisher def. Jessica Johnson/Ashley Kroh (Marshall), 6-4, 6-4
2008	Tracy Lin/Riza Zalameda def. Melanie Gloria/Tinesta Rowe (Fresno St.), 6-2, 4-6, 6-3



Allyson Cooper (left) and Stella Sampras took home the NCAA Doubles title in 1989 at the Los Angeles Tennis Center.



Keri Phebus won the NCAA Singles and Doubles Championships (w/Susie Starrett) in 1995.



Tracy Lin (left) and Riza Zalameda won the 2008 NCAA Doubles title in Tulsa, Okla.



Daniela Bercek (left) and Lauren Fisher claimed the 2004 NCAA Doubles title in Athens, Ga.



## Bruins in the Pros / Singles Records

### ► Bruins on the WTA Tour

Career-high WTA Tour Rankings as of Jan. 9, 2015. Players are Listed in order of highest singles ranking (Top 500 only).

Name	Singles	Doubles
Kim Po-Messerli	14	6
Patricia Hy-Boulais	28	36
Dana Gilbert	46	NR
Barbara Gerken	55	45
Heather Ludloff	57	37
Jane Chi	62	178
Abigail Spears	66	10
Kathrin Keil	68	209
Paula Smith	87	75
Jessica Emmons	131	71
Keri Phebus	186	147
Jennifer Fuchs	206	113
Jane Thomas	244	106
Stella Sampras	248	142
Stephanie Chi	265	304
Karen Dewis	280	NR
Allyson Cooper	339	249
Iwalani McCalla	347	329
Yasmin Schnack	371	140
Elizabeth Schmidt	380	137
Lynn Lewis	425	295
Brandi Freudenberg	432	380
Elizabeth Lumpkin	443	280
Annica Cooper	464	379
Susie Starrett	491	292



Former Bruin Kimberly Po-Messerli (second from left) and her partner Nathalie Tauziat finished runner-up at the 2001 U.S. Open, falling to Lisa Raymond and Rennae Stubbs in the championship match.



Riza Zalameda



Abigail Spears



Barbara Gerken



Jane Chi

### ► Miscellaneous Singles Records

#### Most Wins Overall

Top 20 (Since 1991)

Name	Record
1. Keri Phebus	144-29
2. Robin Anderson	127-25
3. Annica Cooper	120-55
4. Sara Walker	115-43
5. Yasmin Schnack	106-43
6. Andrea Remyne	105-44
7. Elizabeth Lumpkin	101-41
8. Riza Zalameda	97-55
9. Tracy Lin	94-58
10. Kelly Rudolph	91-44
11. Chanelle Van Nguyen	90-37
12. Jane Chi	89-24
13. Laura Gordon	87-56
14. Brandi Freudenberg	84-65
15. Ashley Joelson	83-57
16. Alex McGoodwin	81-46
17. Elizabeth Schmidt	79-71
18. Sarah Gregg	68-57
19. Paige Yaroshuk	65-66
20. Maya Johansson	63-32

#### Most Wins at No. 1 Singles

Top 10 (Since 1991)

Name	Wins
1. Robin Anderson	73
2. Keri Phebus	51
3. Sara Walker	38
4. Riza Zalameda	36
5. Annica Cooper	29
6. Yasmin Schnack	28
7. Daniela Bercek	20
Jane Chi	19
9. Megan Bradley	15
10. Jackie Carleton	14
McCall Jones	14



Sara Walker

## All-Time Records

### ► Yearly Record (Since 1972)

Year	Record	National Finish	Conference Finish	Head Coach
1972	8-0	—	—	Bill Zaima
1973	8-1	—	—	Bill Zaima
1974	8-2	—	—	Bill Zaima
1975	16-5	—	—	Bill Zaima
1976	18-3	4th	1st (SCWAC)	Bill Zaima
1977	16-4	9th	2nd (WCAA)	Gayle Godwin
1978	23-4	3rd	2nd (WCAA)	Gayle Godwin
1979	21-3	4th	1st (WCAA)	Gayle Godwin
1980	21-10	6th	2nd (WCAA)	Gayle Godwin
1981	27-4	1st	2nd (WCAA)	Gayle Godwin
1982	29-4	2nd	1st (WCAA)	Gayle Godwin
1983	23-6	3rd	2nd (WCAA)	Gayle Godwin
1984	17-7	5th	4th (WCAA)	Gayle Godwin
1985	14-11	9th	4th (PacWest)	Gayle Godwin
1986	14-9	9th	T-4th (PacWest)	Gayle Godwin, Bill Zaima
1987	22-7	5th	2nd (Pac-10)	Bill Zaima
1988	20-6	3rd	3rd (Pac-10)	Bill Zaima
1989	21-5	2nd	2nd (Pac-10)	Bill Zaima
1990	23-7	3rd	3rd (Pac-10)	Bill Zaima
1991	23-5	2nd	2nd (Pac-10)	Bill Zaima
1992	16-8	T-5th	T-4th (Pac-10)	Bill Zaima
1993	8-14	T-9th	6th (Pac-10)	Bill Zaima
1994	15-8	T-9th	3rd (Pac-10)	Bill Zaima
1995	16-9	T-5th	4th (Pac-10)	Bill Zaima
1996	19-6	T-3rd	3rd (Pac-10)	Bill Zaima
1997	16-6	T-5th	2nd (Pac-10)	Stella Sampras
1998	17-11	T-9th	4th (Pac-10)	Stella Sampras
1999	18-8	T-17th	4th (Pac-10)	Stella Sampras
2000	17-9	T-5th	T-2nd (Pac-10)	Stella Sampras
2001	9-19	T-9th	7th (Pac-10)	Stella Sampras
2002	19-5	T-5th	3rd (Pac-10)	Stella Sampras Webster
2003	16-11	T-5th	5th (Pac-10)	Stella Sampras Webster
2004	21-8	2nd	3rd (Pac-10)	Stella Sampras Webster
2005	17-6	T-9th	3rd (Pac-10)	Stella Sampras Webster
2006	15-7	T-9th	4th (Pac-10)	Stella Sampras Webster
2007	21-8	2nd	T-2nd (Pac-10)	Stella Sampras Webster
2008	24-5	1st	T-1st (Pac-10)	Stella Sampras Webster
2009	19-7	T-9th	4th (Pac-10)	Stella Sampras Webster
2010	21-4	T-9th	2nd (Pac-10)	Stella Sampras Webster
2011	22-6	T-3rd	2nd (Pac-10)	Stella Sampras Webster
2012	26-3	2nd	T-3rd (Pac-12)	Stella Sampras Webster
2013	20-6	T-3rd	4th (Pac-12)	Stella Sampras Webster
2014	27-2	1st	2nd (Pac-12)	Stella Sampras Webster
2015	23-5	2nd	3rd (Pac-12)	Stella Sampras Webster

**TOTALS:** 814-284 (.741) in 44 years / **Note:** W. tennis was elevated to varsity status in 1976



The 1982 Bruins won the WCAA Conference title, advancing to their second-straight NCAA Final.



The 1991 UCLA team finished with a 23-5 overall record.



Led by All-American Keri Phebus, the 1996 Bruins tied for third at the NCAA Championships.

### ► All-Time Record vs. Opponents

Arizona	62-8	Florida State	1-0
Arizona State	56-16	Fresno State	12-1
Arkansas	2-0	Georgia	5-8
Army	2-0	Georgia Tech	3-2
Baylor	5-5	Harvard	4-0
Boise State	2-0	Hawai'i	3-0
Boston College	1-0	Hawai'i-Pacific	1-0
Boston University	2-0	Idaho	1-0
Brown	1-0	Illinois	1-0
Brigham Young	5-2	Illinois State	1-0
Buffalo	1-0	Indiana	7-0
Cal	40-33	IUPUI	1-0
Cal Poly	5-0	Kansas	2-0
Cal State Bakersfield	1-0	Kansas State	1-0
Cal State Dominguez Hills	1-0	Kentucky	4-0
Cal State Fullerton	21-0	Long Beach State	29-0
Cal State Los Angeles	4-0	Louisiana State	1-0
Cal State Northridge	7-0	Loyola Marymount	22-0
Clemson	6-3	Marshall	1-0
Colorado	5-0	Marquette	1-0
Denver	1-0	Miami	12-4
Duke	6-4	Michigan	2-0
Eastern Kentucky	1-0	Minnesota	2-0
Florida	12-14	Mississippi	2-1

New Mexico	0-1	Texas	10-10
Notre Dame	4-0	Texas A&M	2-1
North Carolina	6-2	Trinity	9-8
Northwestern	6-3	Tulsa	1-0
Ohio State	0-1	UC Davis	3-0
Oklahoma	2-0	UC Irvine	40-2
Oklahoma State	2-0	UC Riverside	1-0
Oregon	19-0	UC Santa Barbara	30-0
Pacific	7-1	UC San Diego	2-0
Pepperdine	54-13	UNLV	12-0
Princeton	1-0	USC	50-48
Quinnipiac	2-0	US International	4-0
Rice	3-0	Utah	14-0
Rollins	1-1	Vanderbilt	2-3
Sacramento State	2-0	Virginia	1-0
Saint Mary's	4-0	Wake Forest	1-0
San Diego	16-0	Washington	23-2
San Diego State	26-7	Washington State	21-1
Santa Clara	1-0	Western Michigan	1-0
South Alabama	1-1	William & Mary	3-1
South Carolina	4-0	Wisconsin	4-0
Southern	1-0	Yale	2-0
Southern Methodist	3-1		
Stanford	19-75		
Texas Christian	3-0		
Tennessee	3-0		





With the ability to hold more than 10,000 spectators, the Los Angeles Tennis Center is one of the nation's premier on-campus facilities.

### ► The Los Angeles Tennis Center

Located on the UCLA campus nestled just west of Pauley Pavilion and south of Drake Stadium is the impressive Los Angeles Tennis Center: home to both UCLA men's and women's tennis teams.

The LATC was the first large-scale outdoor tennis stadium opened in the Los Angeles metropolitan area and was officially dedicated on May 20, 1984, just in time to host the 1984 NCAA Women's Tennis Championships and the 1984 Olympic Games. Since then, the LATC has been site of several top collegiate and professional tournaments. The NCAA Women's Tennis Championships returned to the LATC in 1987 and '88, while the NCAA Men's Tennis Championships called the LATC home in 1997.

On the professional level, the LATC has been a regular stop of the ATP Tour for many years. The first tournament held at the LATC, the Union 76 Pacific Southwest Open, featured former Bruins Jimmy Connors and Eliot Teltscher in the finals. The tournament, renamed The LA Open, continues to thrive at the LATC each summer.

The LATC features eight lighted, hard-surface courts, a 5,800-permanent seat grandstand around the three main courts and a two-level clubhouse. At full capacity, the LATC can accommodate more than 10,000 spectators. The clubhouse contains locker rooms, coaches' offices and team rooms for both the UCLA men's and women's teams, as well as offices for the Southern California Tennis Association (SCTA).

The second level of the clubhouse features a 4,000-square foot indoor dining area and kitchen. Center court is called the Times-Mirror Center Court. The stadium is named the Straus Stadium and Clubhouse.

Another addition to the LATC came in 2005 when the Greiner Family Scoreboard was added to the back courts. Prior to that, the Budge Offer Family Scoreboard was added to the stadium courts in 2000. Both scoreboards enable fans to follow the action on every court from either location.

The newest project at the LATC was completed in January of 2010, as both the men's and women's teams received a complete renovation of their locker rooms.



The front entrance to the Los Angeles Tennis Center.



In addition to the three stadium courts, the LATC features five back courts.



The men's and women's locker rooms were renovated in 2010.



## Administrator Biographies



### Dan Guerrero

Athletic Director  
14th Year

In 13 years, Dan Guerrero has clearly established a pattern of "image and substance" that few in his profession can match.

UCLA has won 112 NCAA team championships, a figure unmatched by any institution in the nation. UCLA teams have won 26 NCAA championships since his appointment, another national leader, finished second 26 times and have enjoyed an additional 49 Top Five finishes.

More than 80% of UCLA teams have qualified for NCAA post-season competition since 2002. The football team has appeared in 11 bowl games and the men's basketball team advanced to consecutive Final Fours from 2006-08. The program has also won 59 conference championships in 15 different sports, produced nearly 600 All-Americans and featured eight Honda Award winners, including the 2003-04 Collegiate Woman Athlete of the Year.

Furthermore, during the 2012 Summer Olympic Games in London, 32 Bruins participated as athletes or coaches, representing the United States and eight other nations. They won nine medals, including six golds.

Guerrero, recently named the 2014 NACDA Under Armour Athletic Director of the Year award, is the only athletic director at the NCAA Division I level (FBS, FCS and NCAA Division I-AAA) to earn three such awards (2006-07 at UCLA, 2001-02 at UC Irvine). In his 13 years at UCLA, the Bruins have finished second four times and third four times in the race for the Learfield Sports Directors' Cup.

UCLA's academic success under Guerrero is equally noteworthy. Over 13 years and 39 quarters, student-athletes have earned more than 8,500 spots on the Director's Honor Roll. UCLA's Graduation Success Rate (GSR) and Academic Progress Rates (APR) continued their consistent rise this academic year. The Bruin student-athlete GSR is currently at 87%, up 3% from two years ago.

Guerrero came to UCLA in 2002 from UC Irvine, where he had served as UC Irvine's fifth Director of Athletics for 10 years. Prior to arriving at UCI, he was the Athletic Director for five years at Cal State Dominguez Hills (1988-92). He received his Bachelor's degree from UCLA in 1974 and played second base in the Bruin baseball program for four years.

Guerrero was raised in Wilmington, CA. He is married to the former Anne Marie Aniello and they have two grown daughters.



### Chris Carlson

Assoc. Athletic Director  
2nd Year

Chris Carlson, who previously served the men's basketball program at UCLA for five years, begins his second year as an Associate Athletic Director su-

pervising men's tennis. Carlson will also supervise women's tennis, men's basketball and men's and women's golf.

Prior to returning to UCLA, Carlson worked one year as an Associate Commissioner for the West Coast Conference. Previous to that position, he was the head men's basketball coach at UC San Diego, where he guided the Tritons to the Division II NCAA Tournament in three of his six seasons.

Carlson served five years (2003-07) as Director of Operations for former UCLA basketball coach Ben Howland. At UCLA, Carlson was responsible for the day-to-day operations of the program and served as a liaison to the athletic administration and other school officials. Additionally, he assisted in scheduling and recruiting. Prior to that, Carlson served in the same capacity for two years (2002-03) at the University of Pittsburgh.

Originally from the San Diego area, Carlson joined the Pittsburgh staff (where Howland was the head coach) in the summer of 2001. Before joining Howland at Pittsburgh, Carlson was on Howland's coaching staff at Northern Arizona for one season (1998-99). Howland left NAU a year later to take the Pittsburgh head coaching position. Carlson remained at NAU for two more years (1999-2001), where he worked with the Lumberjacks' post players, along with recruiting and scheduling.

Prior to working at Northern Arizona, Carlson served as an assistant coach at his alma mater, UC Santa Barbara, from 1994-98.

Carlson was also an assistant coach at Dos Pueblos HS in Goleta from 1991-93.

His administrative basketball experience includes his one year at the West Coast Conference (2013) and 12 years as a game management assistant for the National Association of Basketball Coaches All-Star Game. Carlson has also worked four NCAA Tournament West Regionals.

Carlson is a 1993 graduate of UC Santa Barbara with a bachelor's degree in History. He is married to Karen Nance and they have two sons, Nicklas, 12, and Charlie, 9.



### Dr. Gene Block

Chancellor  
10th Year

Dr. Gene Block became chancellor of UCLA in August 2007. As chief executive officer, he oversees all aspects of the university's three-part mission of

education, research and service.

A champion of public universities, Chancellor Block has called for UCLA to deepen its engagement with Los Angeles, a city that offers a microcosm of the global community, and to increase access for students from underrepresented populations. An advocate of interdisciplinary scholarship, he emphasizes broad-based, campus-wide planning.

Chancellor Block holds UCLA faculty appointments in psychiatry and biobehavioral sciences in the David Geffen School of Medicine and in physiological science in the College of Letters and Science. A fellow of the American Association for the Advancement of Science and a member of the American Academy of Arts and Sciences, he specializes in circadian biology, which deals with the functioning of 24-hour rhythms in higher organisms.

Previously, Chancellor Block served as vice president and provost of the University of Virginia, where he held the Alumni Council Thomas Jefferson Professorship in Biology and directed the National Science Foundation's Science and Technology Center for Biological Timing. He also headed an NIH graduate training program aimed at increasing the number of scientists from underrepresented groups.

A native of Monticello, N.Y., Chancellor Block holds a bachelor's degree in psychology from Stanford University and a master's and Ph.D. in psychology from the University of Oregon.

The inventor of a number of devices, Chancellor Block holds a patent for a non-contact respiratory monitor for the prevention of Sudden Infant Death Syndrome, and he is an avid collector of vacuum-tube radios.

Chancellor Block and his wife, Carol, have two children.

## ► Women's Tennis Support Staff



**Matt Elliott**  
Compliance



**Dr. Michael Teittel**  
Faculty Athletic Rep.



**Linda Lassiter**  
Academic Counseling



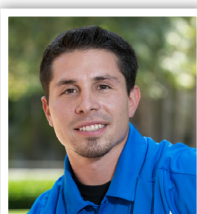
**Dominique Cetale**  
Team Manager



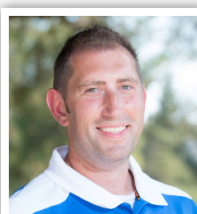
**Allie Glover**  
Team Manager



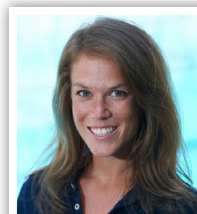
**Max Hammer**  
Director of Operations



**Bobby Andrade**  
Athletic Performance



**Max Bertman**  
Athletic Training



**Lindsay Gaesser**  
Athletic Communications



**Tom Solomon**  
Event Staff